

Lotem-Suite

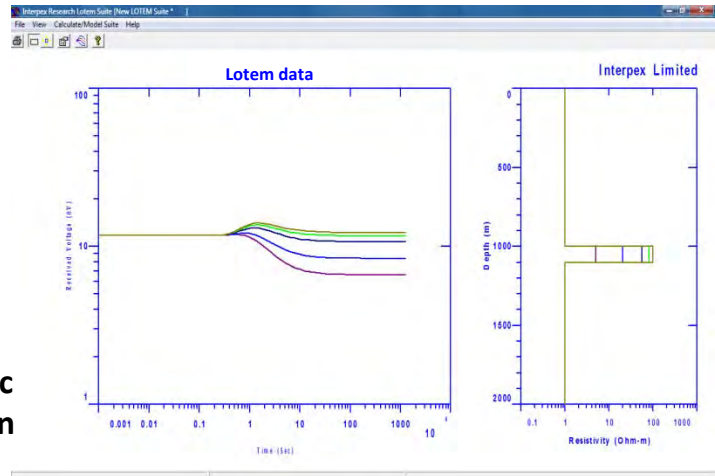
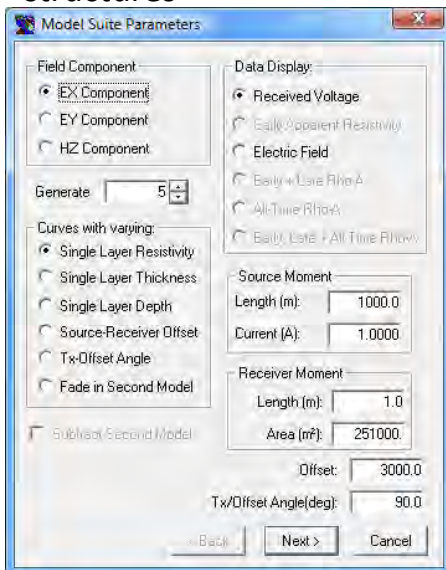
1D LOTEM modeling

Lotem-Suite is a 1D modeling program for Long Offset Transient ElectroMagnetics (LOTEM).

LOTEM is a Time Domain Electromagnetic method (TEM) which uses grounded electric dipole sources for detection and delineation of resistive features in the subsurface.

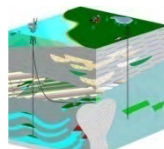
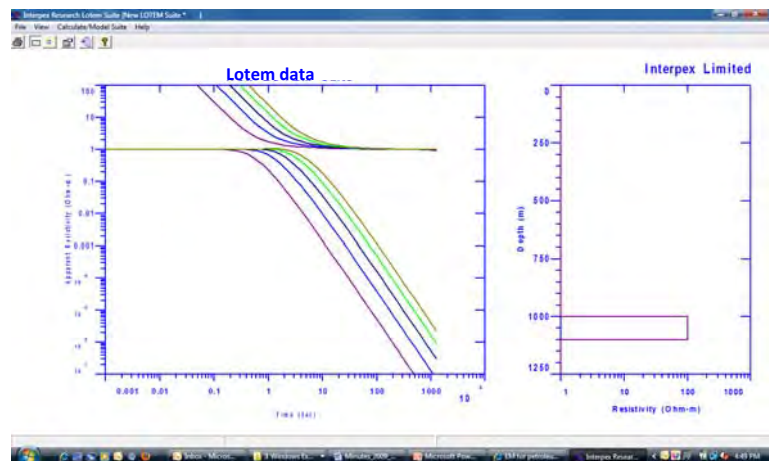
The LOTEM method can also be used for:

- Mapping thin resistive layers, e.g. hydrocarbon saturated layers
- Determining conductive structures, e.g. geothermal anomalies
- Sub basalt imaging
- Complete scanning of the subsurface from shallow to deep structures



Features Include:

- Multi-component calculations
- Multiple parameter variations for single layers
- Spreadsheet data editors with Copy & Paste
- Spreadsheet model editors
- Multiple display features
- ASCII File Export of data & models

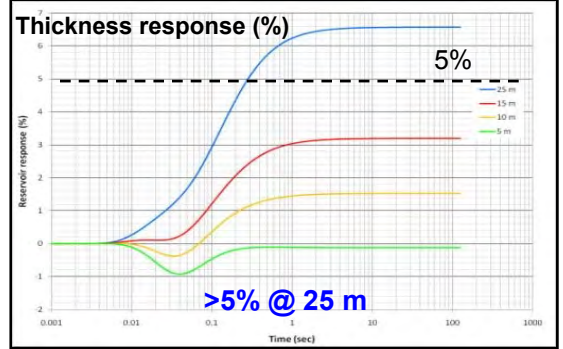
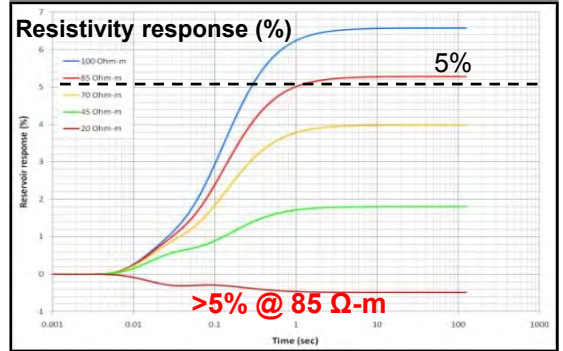
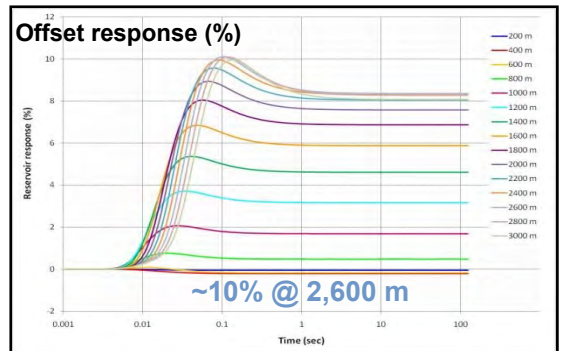
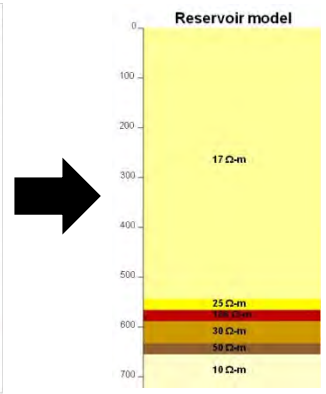
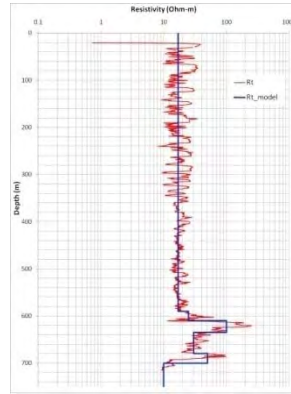
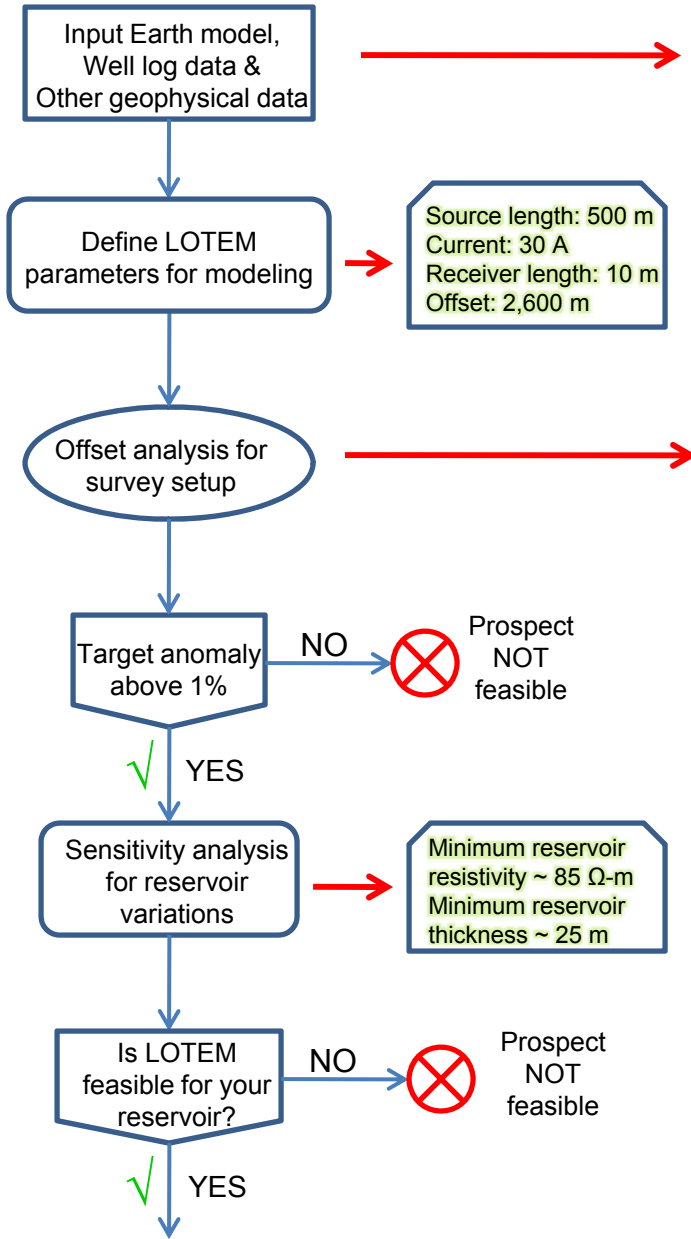


KMS Technologies
An EMGS/RXT company



Software applications

LOTEM feasibility workflow



Survey design & acquisition

Ordering: Interpex, Interpex Research, and KMS Technologies will accept orders by e-mail, FAX or phone.

Interpex & Interpex Research
 P.O. Box 839
 Golden • Colorado • 80402 • USA
 Tel (303) 278-9124 • Fax (303) 278-4007
www.interpex.com
 e-mail: info@interpex.com

KMS Technologies
 6420 Richmond Ave. Suite 610
 Houston • Texas • 77003 • USA
 Tel (713) 532 8144 • Fax (832) 204 8418
www.kmstechnologies.com
 e-mail: info@kmstechnologies.com