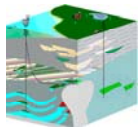


ACQ 2.0 Software

Acquisition & monitoring software



KMS-820 data acquisition unit



Proven robust processing for MT data



Photo courtesy: MobileDemand®

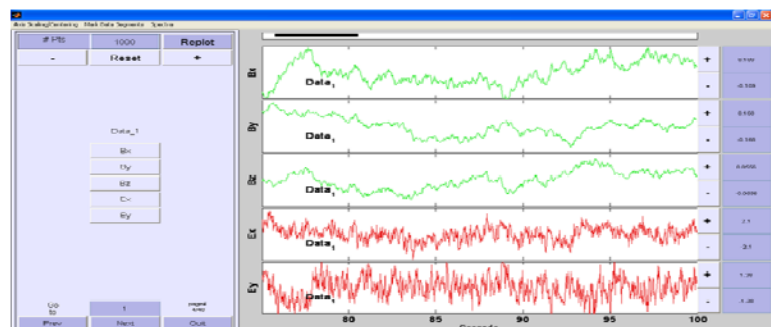
Software features

- Single and remote reference robust processing
- Windows based
- Time & frequency domain display
- Apparent resistivity and phase display
- Real-time acquisition & monitoring software
- EDI output to work with off-the-shelf software
- Competitive price

KMS Technologies

KJT Enterprises Inc.
6420 Richmond Ave., Suite 610
Houston, TX, 77057
USA
Tel.: +1.713.532.8144
Fax: +1.713.532.7776
Email:
info@KMSTechnologies.com
www.KMSTechnologies.com

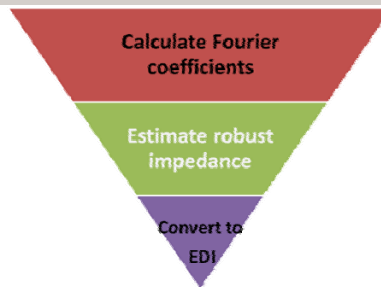
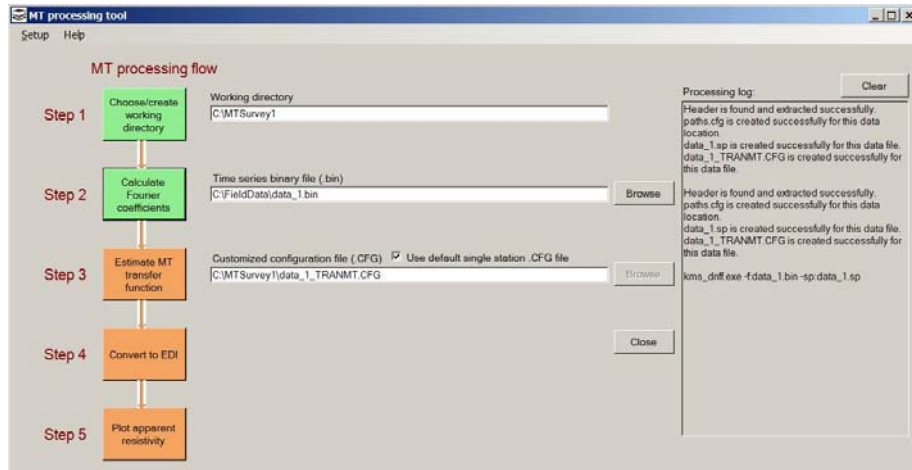
Time domain display



Transforming complexity to simplicity

ACQ 2.0 is the most comprehensive acquisition & monitoring with embedded processing software to accompany KMS-820 system. With 3 basic steps using 3 programs, visualizing apparent resistivity and phase are made easy.

Guided MT processing



Apparent resistivity display

