	<b>USER MANUAL</b>		
	ORIGINATED BY: <b>Ying Liu</b>	REVISION DATE: <b>01/05/2011</b>	DOCUMENT NUMBER: <b>13-0011-800</b>
SUBJECT: <b>User manual for KMS-300 USB wireless adaptor</b>			REVISION: <b>1.0</b>

# USER MANUAL

## for

# KMS–300 USB WIRELESS ADAPTOR

Rev.	ECO	Description	By	Date	Approved
1.0	N/A	Original Issue	Ying	1/5/11	John

KMS TECHNOLOGIES PROPRIETARY

This information is proprietary of KMS Technologies and is not to be distributed in derogation of KMS Technologies property right.

THIS PRODUCT INCORPORATES COPYRIGHT PROTECTION TECHNOLOGY THAT IS PROTECTED BY U.S. PATENTS AND OTHER INTELLECTUAL PROPERTY RIGHTS. USE OF THIS COPYRIGHT PROTECTION TECHNOLOGY MUST BE AUTHORIZED BY KJT ENTERPRISES INC. REVERSE ENGINEERING OR DISASSEMBLY IS PROHIBITED.

## TABLE OF CONTENTS

<b>1.0</b>	<b>INTRODUCTION .....</b>	<b>4</b>
<b>2.0</b>	<b>PRODUCT DESCRIPTION .....</b>	<b>4</b>
<b>3.0</b>	<b>OPERATION GUIDE .....</b>	<b>4</b>
<b>3.1</b>	<b>INDICATION PANEL AND CONNECTIONS .....</b>	<b>4</b>
<b>3.2</b>	<b>DRIVER INSTALLATION .....</b>	<b>5</b>
<b>3.3</b>	<b>COMMUNICATION WITH THE UNIT .....</b>	<b>6</b>
<b>4.0</b>	<b>WARRANTY .....</b>	<b>7</b>
<b>5.0</b>	<b>COPYRIGHT STATEMENT .....</b>	<b>7</b>

## 1.0 INTRODUCTION

Thank you for choosing the KMS-300 wireless adaptor. This manual provides detailed descriptions, specifications and operating instructions of the unit.

## 2.0 PRODUCT DESCRIPTION

The KMS-300 wireless adaptor is designed to use with KMS-820 Data Acquisition Unit (DAU) for wireless communication purpose. When KMS-300 is connected with the computer, it can help the computer to transmit and receive data from KMS-820 unit wirelessly.

## 3.0 OPERATION GUIDE

This section introduces the indication LEDs and connectors on the KMS-300.

### 3.1 INDICATION PANEL AND CONNECTIONS

#### 3.1.1 Indication Panel (Figure 1)

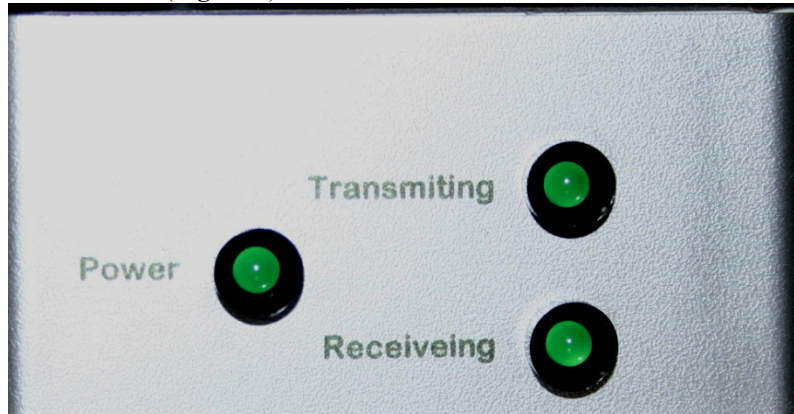


Figure 1 - Indication Panel

There are 3 LEDs on the indication panel: power, transmitting and receiving. Power LED will be solid green if power is applied. Transmitting and receiving LEDs will be blinking when there is communication between the KMS-820 unit and the computer.

#### 3.1.2 Connections

There are 2 connections on the adaptor, 1 is for the A to B USB cable, and the other is for external antenna, as shown in figure 2 and 3.



Figure 2 – USB connection



Figure 3 – Wireless Antenna connection

**Note: Do not over tighten the wireless antenna to the unit.**

### 3.2 DRIVER INSTALLATION

The driver installation software is included in the KMS-820 installation CD.

1. Insert the CD into the CD-ROM drive of your computer. The CD should start automatically. If the menu does not start, go to "Start" → "Run" and type in `d:\setup.exe` (where d: is your CD-ROM drive).
2. The AutoPlay window, 4, may appear. Click on "Run Autorun.exe".

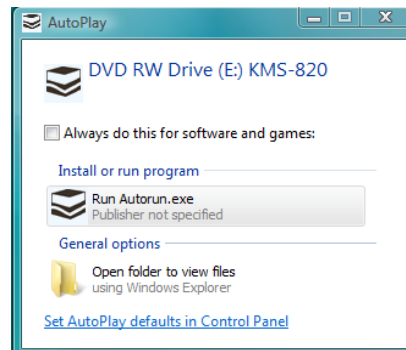


Figure 4- AutoPlay window

3. The KMS-820 Setup window will appear, see figure 5.

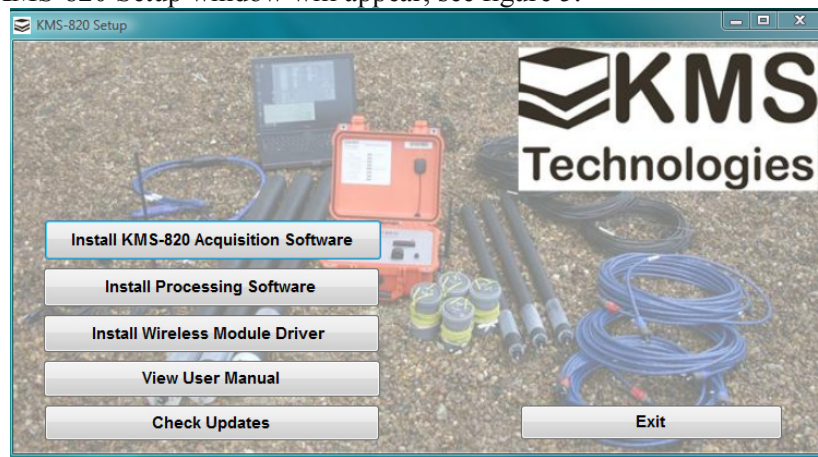


Figure 5- KMS-820 Setup window

4. Click on “Install Wireless Module Driver” button. Follow the on-screen instructions to install the driver. The Windows Security window, **Error! Reference source not found.**, may open depending on the security settings the user has applied to Windows®. Click on “Install this driver software anyway”.

For more information, please refer to KMS-820 user manual section 6.4.01 Installation.

### 3.3 COMMUNICATION WITH THE UNIT

After installing the driver software, KMS-300 is ready to use.

1. Connect the KMS-300 with the computer using an A to B USB cable.
2. Turn the KMS-820 unit on.
3. Run the monitoring and acquisition software for KMS-820. The communication port window, as shown in figure 6, will appear. Choose the KMS300 wireless adaptor to connect.
4. User can communicate with KMS-820 wirelessly through KMS-300.

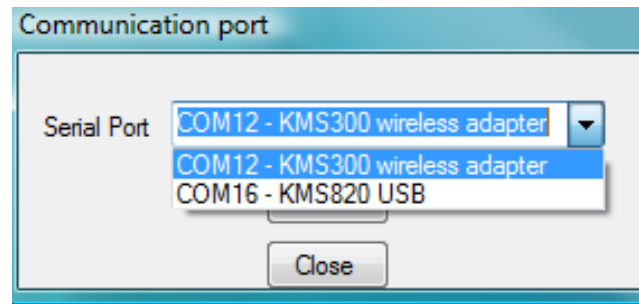


Figure 6- Communication port window

For more information about the monitoring and acquisition software, please refer to the KMS-820 user manual.

## 4.0 WARRANTY

The term of warranty is 12 months after delivery if all requirements of the present instruction including precautions and warnings are adhered to. During this term the manufacturer is liable to repair the defects occurred through no fault of the consumer or force majeure, or if not possible, to change the device by other equivalent specimen.

## 5.0 COPYRIGHT STATEMENT

Copyright 2011© by KJT Enterprises Inc. All rights reserved.

This user manual may be downloaded for personal use. Reproduction, redistributing, or reselling any material from this user manual in either machine-readable form or any other form without the permission of KJT Enterprises Inc. is strictly forbidden.

For permissions and other copyright-related questions please direct in writing/email to

KMS Technologies –KJT Enterprises Inc.  
6420 Richmond Ave, Suite 610  
Houston, TX 77057  
USA

[Kurt@kmstechnologies.com](mailto:Kurt@kmstechnologies.com)