	<b>USER MANUAL</b>		
	ORIGINATED BY: <b>Dale Brown</b>	REVISION DATE: <b>01/05/2011</b>	DOCUMENT NUMBER: <b>13-0010-800</b>
SUBJECT: <b>User manual for KMS-820 data acquisition unit</b>			REVISION: <b>1.0</b>

# USER MANUAL

## for

# KMS–820 DATA ACQUISITION UNIT

Rev.	ECO	Description	By	Date	Approved
1.0	N/A	Original Issue	Dale	1/5/11	John

KMS TECHNOLOGIES PROPRIETARY

This information is proprietary of KMS Technologies and is not to be distributed in derogation of KMS Technologies property right.

THIS PRODUCT INCORPORATES COPYRIGHT PROTECTION TECHNOLOGY THAT IS PROTECTED BY U.S. PATENTS AND OTHER INTELLECTUAL PROPERTY RIGHTS. USE OF THIS COPYRIGHT PROTECTION TECHNOLOGY MUST BE AUTHORIZED BY KJT ENTERPRISES INC. REVERSE ENGINEERING OR DISASSEMBLY IS PROHIBITED.

## TABLE OF CONTENTS

<b>TABLE OF TABLES .....</b>	<b>6</b>
<b>TABLE OF FIGURES .....</b>	<b>7</b>
<b>1.0 IMPORTANT SAFETY INSTRUCTIONS.....</b>	<b>9</b>
<b>2.0 INTRODUCTION .....</b>	<b>9</b>
<b>3.0 PRODUCT DESCRIPTION .....</b>	<b>9</b>
<b>4.0 GENERAL INFORMATION .....</b>	<b>10</b>
<b>5.0 PRODUCT SPECIFICATION .....</b>	<b>11</b>
<b>6.0 OPERATION GUIDE .....</b>	<b>12</b>
<b>6.1 INSTRUMENT PANELS AND CONNECTIONS.....</b>	<b>12</b>
6.1.01 Top Panel .....	12
6.1.02 Right Side Panel .....	13
6.1.03 Left Side Panel .....	14
<b>6.2 CONNECTING THE UNIT.....</b>	<b>15</b>
6.2.01 Induction Coil Magnetometers.....	15
6.2.02 Fluxgate Magnetometers.....	16
6.2.03 Electrodes.....	16
6.2.04 Wireless Antenna .....	18
6.2.05 GPS Antenna.....	19
6.2.06 KMS-120 WIRELESS/GPS with TRIPOD (optional) .....	19
6.2.07 Digital Input .....	20
6.2.08 External Battery .....	20
6.2.09 External Ground .....	21
<b>6.3 CONTROLS AND FUNCTIONS .....</b>	<b>21</b>
6.3.01 LED(s) .....	21
6.3.01.1 GPS Indicator.....	21
6.3.01.2 Memory Card Indicator .....	21
6.3.01.3 Battery Indicator.....	21
6.3.01.4 Service Indicator .....	22

6.3.01.5	Error Indicator .....	22
6.3.02	Controls .....	22
6.3.02.1	Power Button.....	22
6.3.02.2	Acquire (Start/Stop) Button .....	22
6.3.02.3	Display (On/Off) button.....	23
6.3.02.4	Keypad Lock Button.....	23
6.3.02.5	Memory Card Exchange Button.....	23
6.3.03	F1, F2 and Control Buttons.....	24
6.3.04	USB Port.....	24
6.3.05	Memory Card .....	24
6.3.06	Internal Battery Charging Connection.....	25
6.4	Monitoring and Acquisition Software .....	25
6.4.01	Installation .....	25
6.4.02	Description and Operation.....	26
6.4.02.1	Connecting the KMS-820 to PC via USB A-A cable.....	27
6.4.02.2	Connecting the KMS-820 to PC via KMS-300 USB WIRELESS ADAPTER .....	27
6.4.02.3	Starting the Acquisition and Monitoring software .....	28
6.4.02.4	Initial Communications Port window.....	29
6.4.02.5	Main Control Window (Figure 31).....	30
6.4.02.5.1	System information section (Figure 32).....	31
6.4.02.5.2	Unit status section (Figure 33).....	31
6.4.02.5.3	Memory Card settings & status section (Figure 34) .....	32
6.4.02.5.4	GPS & timing section (Figure 35).....	33
6.4.02.5.5	PC settings & status section (Figure 36).....	34
6.4.02.5.6	Channel settings and status section (Figure 37) .....	35
6.4.02.5.7	Acquisition bar (Figure 38).....	36
6.4.02.5.8	Menu bar (Figure 39 & Figure 40) .....	36
6.4.02.5.8.1	System submenu .....	37
1.	System information .....	37
2.	Wireless network.....	38
3.	Send PC time.....	39
6.4.02.5.8.2	Setup submenu.....	39
1.	Serial port.....	39



2.	Acquisition settings .....	39
3.	Gain verification.....	40
6.4.02.5.8.3	Display submenu .....	41
1.	Waveform .....	41
2.	Raw data .....	42
6.4.02.5.8.4	Tools submenu.....	42
1.	Binary to ASCII .....	42
2.	Merge binary files .....	43
3.	Data processing .....	45
6.4.03	Battery life .....	48
6.4.04	Flash drive mode .....	48
<b>7.0</b>	<b>WARRANTY .....</b>	<b>48</b>
<b>8.0</b>	<b>COPYRIGHT STATEMENT .....</b>	<b>48</b>
<b>9.0</b>	<b>TROUBLESHOOTING .....</b>	<b>49</b>
<b>10.0</b>	<b>APPENDIX .....</b>	<b>51</b>
10.1	Header Definition .....	51
10.2	Example merged error log file. ....	57

## TABLE OF TABLES

Table 1 - Product specification .....	11
Table 2 - Analog input connector pin assignment.....	14
Table 3 - KMS-100 INDUCTION COIL TRANSITION CABLE to KMS-820 channel assignment .....	16
Table 4 - KMS-110 ELECTRODE TRANSITION CABLE to KMS-820 channel assignment.....	17
Table 5 -Troubleshooting.....	50

## TABLE OF FIGURES

Figure 1 - Found new hardware window .....	10
Figure 2 - Top Panel .....	12
Figure 3 - Right side panel.....	13
Figure 4 - Left side panel.....	14
Figure 5- KMS-100 INDUCTION COIL TRANSITION CABLE.....	15
Figure 6 - KMS-105 20m COIL EXTENSION CABLE.....	15
Figure 7 - LEMI-118 directly connected to KMS-100 .....	15
Figure 8- LEMI-118 connected to KMS-105 then KMS-100.....	15
Figure 9 - KMS-110 ELECTRODE TRANSITION CABLE.....	17
Figure 10- KMS-115 50m ELECTRODE EXTENSION CABLE .....	17
Figure 11- KMS-115 50m ELECTRODE EXTENSION CABLE connected to KMS-110 ELECTRODE TRANSITION CABLE .....	18
Figure 12 - Connecting the LEMI-701 to the KMS0115 50m ELECTRODE EXTENSION CABLE .....	18
Figure 13 - Connecting the LEMI-701 to the KMS0115 50m ELECTRODE EXTENSION CABLE .....	18
Figure 14 - 900 MHz to 3dBi wireless antenna and GPS antenna installed on the KMS-820.....	18
Figure 15 - KMS-120 WIRELESS/GPS with TRIPOD .....	19
Figure 16 - GPS dust cap installed .....	20
Figure 17 - KMS-120 connectors.....	20
Figure 18 - 900 MHz wireless antenna to KMS-120.....	20
Figure 19 - SD card installation .....	25
Figure 20 - Battery Charger .....	25
Figure 21 - Battery charger connected to the KMS-820.....	25
Figure 22 - AutoPlay window .....	26
Figure 23 - KMS-820 Setup window .....	26
Figure 24 - Found New Hardware window .....	27
Figure 25 - Windows Security window .....	27
Figure 26- Desktop shortcut.....	28
Figure 27 - Start menu location.....	28
Figure 28 - Windows Security window .....	29
Figure 29 - Communication port window.....	29
Figure 30 - Communications error window.....	30
Figure 31 - Main control window.....	30
Figure 32 - System information section of the main control window .....	31
Figure 33 – Unit status section of the main control window .....	31
Figure 34 - Memory card settings & status section of the main control window.....	32
Figure 35 - GPS & timing section of the main window .....	33
Figure 36 - PC settings & status section of the main window .....	34
Figure 37 - Channel settings & status section of the main window .....	35
Figure 38 - Acquisition bar.....	36
Figure 39 - Menu bar for the main window .....	36
Figure 40 - Menu bar and submenu options .....	36
Figure 41 - System information window .....	37
Figure 42 - Wireless network window.....	38

Figure 43 - Acquisition setup window.....	39
Figure 44 - Gain verification window .....	40
Figure 45 - Real-time waveforms window .....	41
Figure 46 - Communication Log window.....	42
Figure 47 - Binary to ASCII conversion window .....	43
Figure 48 - Merge binary files window .....	44
Figure 49 - Integrity check successful window.....	44
Figure 50 -Integrity check error window.....	45
Figure 52- MT data processing window .....	46
Figure 53 - Information window .....	46
Figure 54 – Apparent resistivity curves.....	47
Figure 55 - SD card adapter cable and connector.....	49
Figure 56 - Internal battery and connectors .....	50

## 1.0 IMPORTANT SAFETY INSTRUCTIONS

- 1. Read these instructions.**
- 2. Keep these instructions.**
- 3. Heed all warnings.**
- 4. Follow all instructions.**
- 5. Clean only with dry cloth.**
- 6. Use only attachments/accessories specified by the manufacturer.**
- 7. Refer all servicing to qualified service personnel. Servicing is required when the unit has been damaged in any way, such as liquid has been spilled in the interior of unit, does not operate normally or has been damaged.**

## 2.0 INTRODUCTION

Thank you for choosing the KMS-820 data acquisition unit. This manual provides detailed descriptions, specifications and operating instructions of the unit.

## 3.0 PRODUCT DESCRIPTION

The KMS-820 Data Acquisition Unit (DAU) is designed for EM (Electro-Magnetic) recording to obtain resistivity and velocity structure to reduce risk for oil and gas exploration companies. The unit can be used for general purpose acquisition and long term monitoring services. The KMS-820 has six 24-bit low noise, low drifting channels. These six channels are sampled simultaneously and synchronized with GPS. In addition, KMS-820 has expandable GPS synchronized digital interface for digital sensors or additional customized timing requirements. If more channels are desired, the simple addition of more units can deliver these addition channels since both the sampling starting up time and sampling clock are synchronized with GPS. The data is saved on a SD memory card and can be streamed to personal computer (PC) via USB (up to 2.8 MBit/s) or 900 MHz wireless network (up to 80Kbit/s) in real time for quality check purpose. The saved files are binary format in time series, including the highest sampling rate (100 kHz) since the system can write the data at high speed to the memory card. This gives full control of how the data is being processed without any loss. The Microsoft Windows® based software is provided for real time status monitoring and waveform displaying. The long range wireless networking, up to 5 miles depending on terrain or unlimited in relaying mode, gives ease and flexibility during field operation. The unit can provide days of acquisition without a battery change due to its low power design and flexible working scheme. All the acquiring sequence, such as sample frequencies, survey time duration sequence, gain, filter setting, etc., can be downloaded through local wireless network so that there is no need to manually change each units setting during the a survey.

The KMS-820 is cost effective and delivers high quality EM data. It can be easily and seamlessly operated along with seismic systems. The KMS-820 system reduces maintenance and deployment cost with high reliability, and KMS provides full support for EM modeling and interpretation.

## 4.0 GENERAL INFORMATION

The software and drivers for the KMS-820 DATA ACQUISITION UNIT, KMS-300 USB WIRELESS ADAPTER and KMS-200 MT Processing software have been tested on Microsoft Windows® XP, VISTA and 7, both the 32 and 64 bit versions. Figures contained within this user manual are shown from a 32 bit Windows Vista operating system. Some figures may be slightly different for different versions of Windows®.

When connecting either the KMS-820 DATA ACQUISITION UNIT or the KMS-300 USB WIRELESS ADAPTER to a computer with the supplied USB cables, Windows® may not be able to determine the hardware connected to the computer or which driver to install. Anytime Windows® ask you to install driver for “Found New Hardware” as shown in a figure similar to Figure 1, close /cancel this window and refer to this user manual for connecting the KMS-820 or KMS-300 systems and starting the Acquisition and Monitoring software. The Acquisition and Monitoring software installs any drivers if required when the program starts each time. The KMS-300 drivers are installed from the “Installation CD” supplied with the KMS-300 as shown on page 25 in this manual.

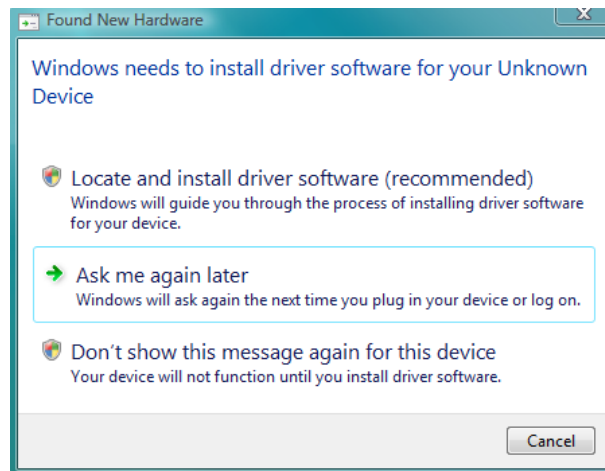


Figure 1 - Found new hardware window

The KMS-820 DATA ACQUISITION UNIT is sealed against the weather and is considered weather-proof. The unit is not water-proof and should not be submerged in water or left in standing water for extended periods of time. The unit also should not be left out in extreme weather conditions.

## 5.0 PRODUCT SPECIFICATION

Number of Channels:	6
A/D resolution	24 bit
Signal bandwidth	DC to 20KHz with four low pass filter settings (20KHz, 1KHz, 10Hz and bypass), additional low pass filter with half of the sampling rate is implemented inside 24-bit sigma -delta A/D
Sampling rate	40, 80, 200, 1K, 4K, 10K, 20K, 40K, 100K Hz, other customized frequencies are available upon request
Input impedance	> 1.0M Ohm
Input signal dynamic range	-2.5V ~ +2.5V, with DC offset from -9V ~ +9V
Gain	Up to 2,500, with 12 gain settings
DC offset removal	Each channel has its own 16-bit D/A to remove external DC offset from -9V ~ +9V
Timing Control	GPS synchronized
Wireless network	Long range wireless up to 8 km (5 miles) depending on terrain or unlimited with relaying mode
Data saving and retrieving	Data is saved to SD card; the files can be retrieved from SD card or directly copied to PC through USB flash drive mode without removing the SD card
Data monitoring	Data can be read back through USB port or wireless network for real-time status monitoring and quality check
On-board Temperature measurement	Yes
Power supply	External +7.5 ~ 32Vdc supply or internal 12V battery; typical power consumption about 5 W
Temperature rating	-30°C to 50°C
Digital interface	UART interface with digital flux gate
Additional interface	Optional digital interface to accommodate additional customized timing and digital interface requirements

Table 1 - Product specification

## 6.0 OPERATION GUIDE

### 6.1 INSTRUMENT PANELS AND CONNECTIONS

#### 6.1.01 Top Panel

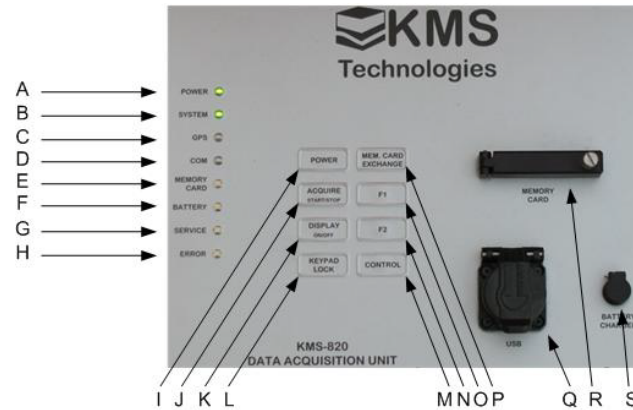


Figure 2 - Top Panel

A – Power Indicator. This green LED will turn on solid when the unit is on.

B- System Indicator.

This green LED will flash slowly (1 flash per second) when the unit is idle.  
The LED will flash quickly (4 flashes per second) when the unit is acquiring data.

C – GPS Indicator. The green LED will turn on solid when GPS is locked and synchronized. The GPS system can take up to 5 minutes to lock.  
See page 21.

D – Communication Indicator. This green LED will flash when the unit is communicating either wirelessly or via the USB port.

E – Memory Card Indicator.

This LED will flash green when writing or reading from the memory card.  
The LED will flash slowly (1 flash per second) red when the memory card is > 90% full.  
The LED will flash quickly (4 flashes per second) red when the memory card is ready for exchange.  
The LED will be solid red when a memory card error has occurred.

See page 21.

F – Battery Indicator.

This LED will be solid green when unit's battery voltage is >12 Vdc indicating a fully charged battery.  
This LED will be off when unit's battery voltage is <12 Vdc but > than 8 Vdc. These are the normal operating voltage ranges for the unit.  
The LED will be solid red when the unit's battery voltage is <8 Vdc. Replace the external battery or charge the internal battery.

See page 21.

G – Service Indicator. The LED will turn on solid green when the unit is in flash drive mode.  
See page 22.

H – Error Indicator.

The LED will turn on solid red when the unit has encountered a critical error requiring a system power off and back on.  
The LED will turn on solid yellow when the unit has recovered from an error.

See page 22.

I – Power Button.

Press for 3 seconds to power on the unit.  
Press for 5 seconds to power off the unit.

See page 22.

J – Acquire (Start/Stop) Button. Press to start/stop data acquisition.  
See page 22.

K – Display (On/Off) Button. Press to turn the LED indicators on/off to conserve battery life.  
See page 23.

L – Keypad Lock Button. Press for 3 seconds to lock all buttons.  
See page 23.

M- Control Button. See page 24

N – F2 Button. See page 24.

O – F1 Button. See page 24.

P - Memory Card Exchange Button. Press for 3 seconds to exchange memory card. See page 23.

Q – USB Port. See page 24.

R – Memory Card. See page 24.

S – Internal Battery Charging Connection. See page 25.



## 6.1.02 Right Side Panel

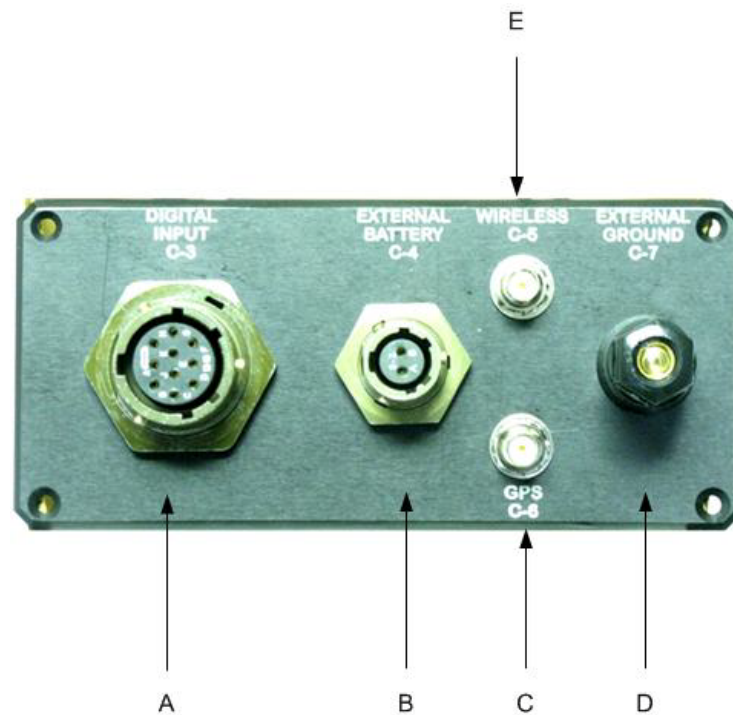


Figure 3 - Right side panel

A – Digital Input Connector C-3. Digital input for the KMS-820. Not used at this time and reserved for future use.

B- External Battery Connector. Used to connect an external battery or power source to KMS-820 unit.

Matting connector supplied with unit (Amphenol Industrial® P/N PT06A-8-2P).

Pin A is positive.  
Pin B is negative.

External battery/power supply of 7.5 to 32 Vdc.

***Warning: Failure to connect an external battery / power supply correctly can cause permanent damage to the unit and voids the warranty.***

C – GPS Antenna Connector C-6.

On-board GPS antenna is connected to the unit.

If external KMS-120 WIRELESS/GPS ANTENNA with TRIPOD (see Figure 15) is used see page 19.

D – External Ground Connection C-7. Can be used to ground the unit and minimize noise.

**Note: In some situations externally grounding the unit can cause noise. Each situation is different and must be determined at the time of data acquisition.**

E – Wireless Antenna Connection C-5

The unit is supplied with a 900 MHz 3dBi.

If external KMS-120 WIRELESS/GPS ANTENNA with TRIPOD (see Figure 15) is used see page 19.

## 6.1.03 Left Side Panel

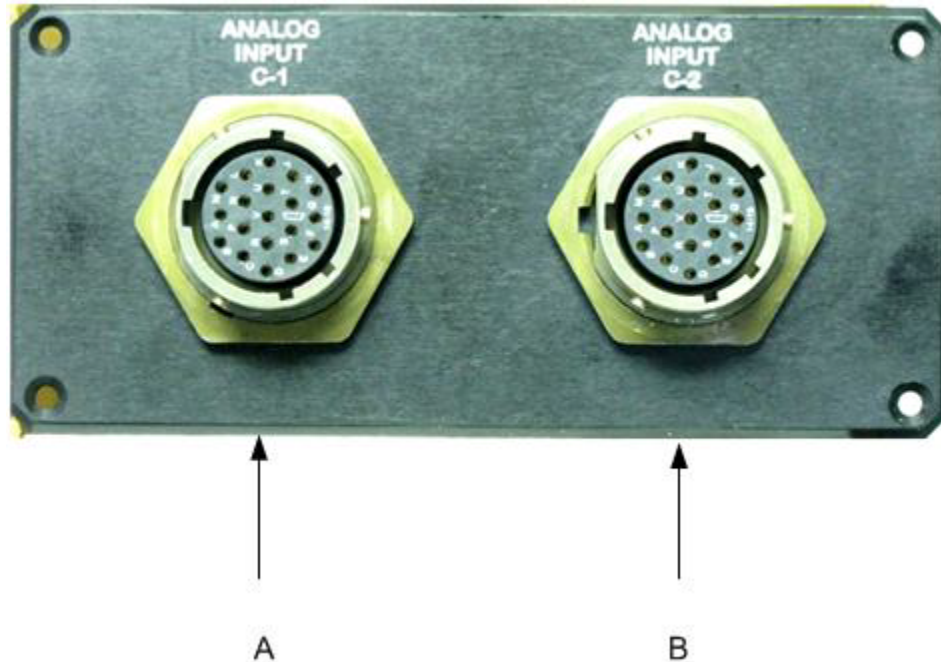


Figure 4 - Left side panel

A – Analog Input Connector C-1. Analog input for channels 1, 2 and 3.

Matting connector supplied with unit (Amphenol Industrial® P/N PT06A-14-19P).

Pin A is Channel 1 Input +  
 Pin B is Channel 1 Input –  
 Pin C is Channel 1 +11Vdc  
 Pin D is Channel 1 -11Vdc  
 Pin E is Channel 2 Input +  
 Pin F is Channel 2 Input –  
 Pin G is Channel 2 +11Vdc  
 Pin H is Channel 2 -11Vdc  
 Pin J is Channel 3 Input +  
 Pin K is Channel 3 Input –  
 Pin L is Channel 3 +11Vdc  
 Pin M is Channel 3 -11Vdc  
 Pin N is Channel 3 Ground  
 Pin R is Channel 1 Ground  
 Pin T is Channel 2 Ground

**FAILURE TO CONNECT SENSOR  
 CORRECTLY CAN CAUSE PERMANENT  
 DAMAGE TO THE UNIT AND / OR SENSOR  
 AND VOIDS THE WARRANTY.**

B – Analog Input Connector C-2. Analog input for channels 4, 5 and 6.

Matting connector supplied with unit (Amphenol Industrial® P/N PT06A-14-19P).

Pin A is Channel 4 Input +  
 Pin B is Channel 4 Input –  
 Pin C is Channel 4 +11Vdc  
 Pin D is Channel 4 -11Vdc  
 Pin E is Channel 5 Input +  
 Pin F is Channel 5 Input –  
 Pin G is Channel 5 +11Vdc  
 Pin H is Channel 5 -11Vdc  
 Pin J is Channel 6 Input +  
 Pin K is Channel 6 Input –  
 Pin L is Channel 6 +11Vdc  
 Pin M is Channel 6 -11Vdc  
 Pin N is Channel 6 Ground  
 Pin R is Channel 4 Ground  
 Pin T is Channel 5 Ground

**FAILURE TO CONNECT SENSOR  
 CORRECTLY CAN CAUSE PERMANENT  
 DAMAGE TO THE UNIT AND / OR SENSOR  
 AND VOIDS THE WARRANTY.**

Table 2 - Analog input connector pin assignment

6.1.03.1 A variety of sensors can be connected to analog input C-1 and C-2. Each connector has three (3) channels with corresponding power supply and ground.

6.1.03.2 When connected with LEMI sensors the KMS-820 recognizes the model of sensor connected, see page 37 for more information.

6.1.03.3 Sensors by other manufactures can be connected using the appropriate adapter.

## 6.2 CONNECTING THE UNIT

### 6.2.01 Induction Coil Magnetometers

Induction coil magnetometers are connected to either Analog Input Connection C-1 or C-2. The KMS-100 INDUCTION COIL TRANSITION CABLE (Figure 5) is directly connected to each coil, or the KMS-105 20m EXTENSION CABLE (Figure 6) is connected between the KMS-100 and each coil to allow the coil to be moved away from the unit and each other.

The following LEMI Induction Magnetometers can be used with the KMS-820.

1. LEMI-118
2. LEMI-120
3. LEMI-121
4. LEMI-123
5. LEMI-134

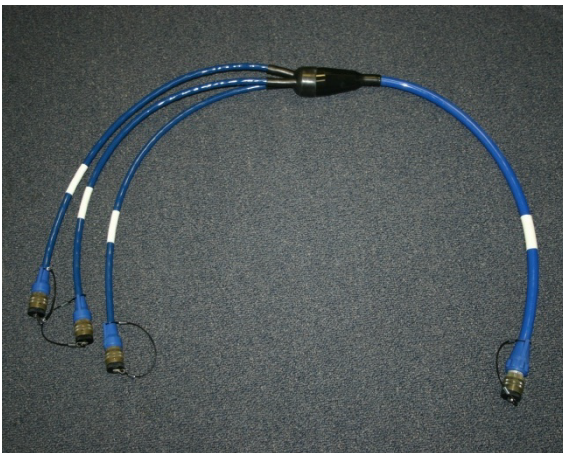


Figure 5- KMS-100 INDUCTION COIL TRANSITION CABLE



Figure 6 - KMS-105 20m COIL EXTENSION CABLE



Figure 7 - LEMI-118 directly connected to KMS-100



Figure 8- LEMI-118 connected to KMS-105 then KMS-100

The KMS-100 is labeled for each coil. Coil 1 would be channel 1 or 4 depending on which analog input connector the KMS-100 is connected to. Example – LEMI 118 S/N 014 is connected to the KMS-105 extension cable which is connected the KMS-100 coil transition cable (Coil 1 position) then connected to the KMS-820 unit to Analog Input Connector C-1. The LEMI 118 S/N 0014 is recorded on channel 1. Table 3 shows the channel(s) assignment for the KMS-100 INDUCTION COIL TRANSITION CABLE.

KMS-100	ANALOG INPUT C-1	ANALOG INPUT C-2
Coil 1	Channel 1	Channel 4
Coil 2	Channel 2	Channel 5
Coil 3	Channel 3	Channel 6

Table 3 - KMS-100 INDUCTION COIL TRANSITION CABLE to KMS-820 channel assignment

**Note:** Some older revision of the KMS-105 20m EXTENSION CABLE will not connect to the KMS-100 INDUCTION COIL TRANSITION CABLE. For those clients with these cables, adapters have been included with KMS-100 INDUCTION COIL TRANSITION CABLE to allow connections to be made.

**Note:** To use the automated KMS-200 MT Processing software, see page 45, the coils must be connected to channels 1, 2, 3 and electrodes connected to channels 4, 5. Channel 6 must not be enabled, see page 35. The user may manually configure the KMS-200 MT Processing software to run in any sensor configuration, refer to the KMS-200 MT Processing software user manual supplement for instructions on manual configuration of the software.

#### 6.2.02 Fluxgate Magnetometers

Each fluxgate magnetometer comes with its own cable to connect to the KMS-820 Data Acquisition Unit.

The following LEMI fluxgate magnetometer can be used with the KMS-820.

1. LEMI-011
2. LEMI-019
3. LEMI-022
4. LEMI-024
5. LEMI-031

#### 6.2.03 Electrodes

Electrodes are connected to the system via the KMS-110 ELECTRODE TRANSITION CABLE, Figure 9.

The LEMI-701 are super-low noise non-polarized electrodes which are manufactured as matched pairs. Each pair of electrodes are connected to the KMS-110 with the KMS-115 50m ELECTRODE EXTENSION CABLE (Figure 10). This allows the electrodes to be placed up to 100 m apart. The KMS-110 connects to the unit with the same connector as the KMS-100 INDUCTION COIL TRANSITION CABLE. This allows up to three (3) pairs of electrodes to be connected to each ANALOG INPUT CONNECTOR at a time. The pairs are numbered from the 19 pin connector as shown in Figure 9. The electrode to KMS-820 channel number is shown in Table 4.

**Note:** To use the automated KMS-200 MT Processing software, see page 45, the coils must be connected to channels 1, 2, 3 and electrodes connected to channels 4, 5. Channel 6 must not be enabled, see page 35. The user may manually configure the KMS-200 MT Processing software to run in any sensor configuration, refer to the KMS-200 MT Processing software user manual supplement for instructions on manual configuration of the software.



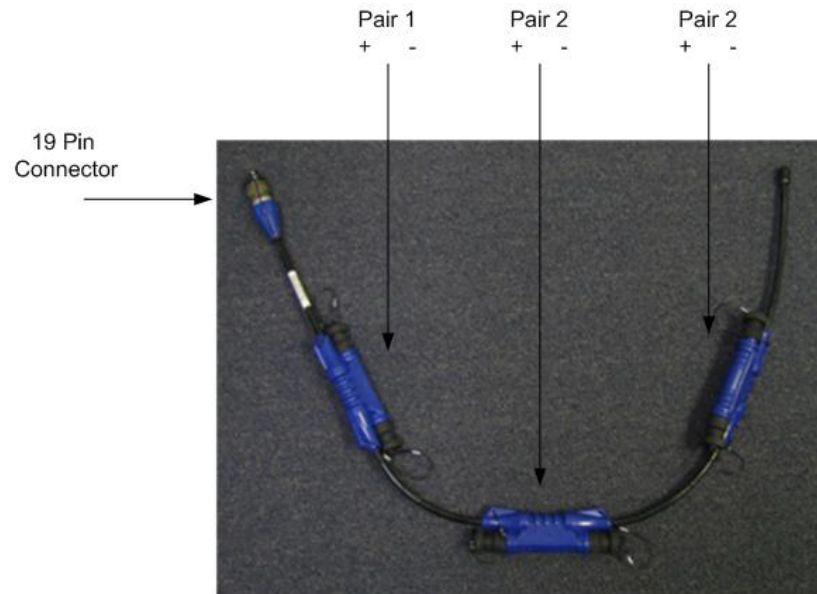


Figure 9 - KMS-110 ELECTRODE TRANSITION CABLE

KMS-110	ANALOG INPUT C-1 (See Table 1)	ANALOG INPUT C-2 (See Table 1)
Pair 1 +	Channel 1 + (Pin A)	Channel 4 + (Pin A)
Pair 1 -	Channel 1 - (Pin B)	Channel 4 - (Pin B)
Pair 2 +	Channel 2 + (Pin E)	Channel 5 + (Pin E)
Pair 2 -	Channel 2 - (Pin F)	Channel 5 - (Pin F)
Pair 3 +	Channel 3 + (Pin J)	Channel 6 + (Pin J)
Pair 3 -	Channel 3 - (Pin K)	Channel 6 - (Pin K)

Table 4 - KMS-110 ELECTRODE TRANSITION CABLE to KMS-820 channel assignment



Figure 10- KMS-115 50m ELECTRODE EXTENSION CABLE

Connecting the KMS-115 50m ELECTRODE EXTENSION CABLE to KMS-110 ELECTRODE TRANSITION CABLE is shown in Figure 11.

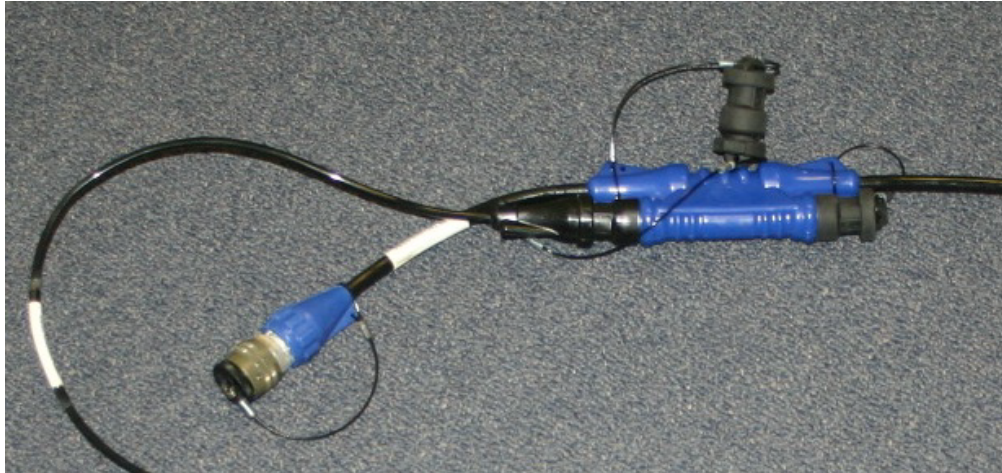


Figure 11- KMS-115 50m ELECTRODE EXTENSION CABLE connected to KMS-110 ELECTRODE TRANSITION CABLE

Connecting an electrode to the KMS-115 50m ELECTRODE EXTENSION CABLE is shown in Figure 12 and Figure 13.

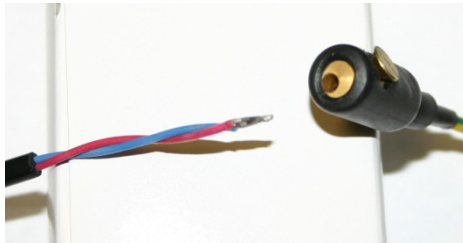


Figure 12 - Connecting the LEMI-701 to the KMS0115 50m ELECTRODE EXTENSION CABLE

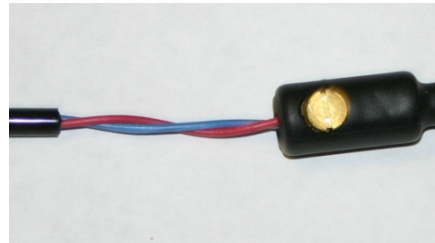


Figure 13 - Connecting the LEMI-701 to the KMS0115 50m ELECTRODE EXTENSION CABLE

#### 6.2.04 Wireless Antenna

The unit is supplied with a 900 MHz 3dBi antenna and is connected to C-5 on the right side panel of the unit as shown in Figure 14. When the wireless antenna is not connected, ensure the attached dust cap is installed.



Figure 14 - 900 MHz to 3dBi wireless antenna and GPS antenna installed on the KMS-820

**Note: Do not over tighten the wireless antenna to the unit.**

### 6.2.05 GPS Antenna

The unit is supplied with a GPS antenna for position and time data. The GPS antenna is pre-installed on the KMS-820 and should be left in place unless a KMS-120 WIRELESS/GPS with TRIPOD is installed.

### 6.2.06 KMS-120 WIRELESS/GPS with TRIPOD (optional)

An optional wireless/GPS with an extendable tripod is available if terrain or other obstacles prevent signals, either wireless or GPS, from reaching the KMS-820 (Figure 15).



Figure 15 - KMS-120 WIRELESS/GPS with TRIPOD

To install the KMS-120 WIRELESS/GPS with TRIPOD proceed as follows:

1. Disconnect the wireless antenna if connected.
2. Disconnect the installed GPS antenna from right side panel connector C-6 and install the attached dust cap to the free hanging GPS connector as shown in Figure 16.
3. Connect the GPS and wireless cables from the KMS-120 WIRELESS/GPS with TRIPOD. The wireless connector is a RP-SMA connector, no pin, and the GPS is a SMA connector, with pin (Figure 17).

**Note:** Connecting the wrong cable/antenna to the KMS-820 can cause damage to KMS-820, antenna and/or cable.

4. Connect the 900 MHz 5dBi antenna, supplied with KMS-120, or 900 MHz 3dBi antenna, supplied with KMS-820, to the KMS-120 WIRELESS/GPS with TRIPOD as shown in Figure 16.
5. The KMS-120 WIRELESS/GPS with TRIPOD is supplied with 4.8 m of cable which allows positioning of the KMS-120 WIRELESS/GPS with TRIPOD to receive wireless/GPS signals.



Dust cap installed to on-board  
GPS cable  
Figure 16 - GPS dust cap installed



GPS Connector  
SMA



Wireless connector  
RP-SMA

Figure 17 - KMS-120 connectors.



Figure 18 - 900 MHz wireless antenna to KMS-120

To disconnect the KMS-120, reverse the above procedure and reconnect on-board GPS antenna and 900 MHz 3dBi antenna.

#### 6.2.07 Digital Input

Digital input connection, right side plate C-3, is not used at this time but reserved for future use.

#### 6.2.08 External Battery

The external battery connection, right side plate C-4, is used to connect an external power source to the KMS-820. A power source from 7.5-32Vdc can be connected. The connector, provided with the unit, is Amphenol Industrial® P/N PT06A-8-2P. Connect the power supply to the connector as follows:

1. Positive polarity to pin A.
2. Negative polarity/ground to pin B.



**Note: In flash drive mode, the unit consumes about 1 W; in normal acquisition mode, the unit consumes about 5 W, depending on the operation condition, such as wireless, USB, and external coil/electrode sensors. The internal 12V battery is rated 3.4AH and may last about 10 hours while a standard external 12V car battery may last over one week. To increase the operating time without changing battery during field survey, two 12V batteries can be serially connected (24V) to provide the power for the unit.**

#### 6.2.09 External Ground

In some cases, the KMS-820 can be externally grounded through connector C-7 to minimize noise. In other cases, this may cause more noise due to conditions at the survey sight. On-site testing is required to minimize noise levels before acquiring data.

### 6.3 CONTROLS AND FUNCTIONS

Refer to Figure 2. Not all controls and functions shown on Figure 2 are described, only those that require further explanation are listed below. If more information is required, please contact KMS Technologies.

#### 6.3.01 LED(s)

##### 6.3.01.1 GPS Indicator

The green LED will turn on solid when GPS is locked and synchronized. Locking GPS can take up to 5 minutes. If lock is not established within 5 minutes, re-orientate the unit so that the on-board GPS antenna faces the equator. The GPS will lock with the cover open or closed. If GPS lock still does not occur, move the unit to a location that allows a clear view of the sky or install the KMS-120 WIRELESS/GPS ANTENNA with TRIPOD. If GPS lock is not possible see note on page 39 .

##### 6.3.01.2 Memory Card Indicator

The memory card LED will flash green when writing or reading from the memory card. The LED will flash slowly (1 flash per second) red when the memory card is greater than 90% full. During continuous acquisition recording, the memory card should be exchanged according to page 23.

The LED will flash quickly (4 flashes per second) red when the memory card is ready for exchange. See page 23 for memory card exchange procedure.

The LED will be solid red when a memory card error has occurred (see trouble shooting section of this manual for memory card errors and recommended actions) if this error occurs while a memory card is installed in the unit perform a memory card exchange, see page 23.

##### 6.3.01.3 Battery Indicator

The LED will be solid green when the battery voltage is  $> 12$  Vdc.

The LED will be off when the battery voltage is  $< 12$  Vdc but  $> 8$  Vdc. Battery voltage between 8V ~ 32V is the normal operating band for the unit.

The LED will be solid red when the unit is  $< 8$  Vdc; replace the external battery or charge the internal battery.

The internal battery life is 3 to 5 years depending on use. If the internal battery will not hold a charge, see trouble shooting section of this manual.

#### 6.3.01.4 Service Indicator

The LED will turn on solid green when the unit is in flash drive mode. See page 48 to place the units in flash drive mode.

#### 6.3.01.5 Error Indicator

1. The LED will turn on solid red when the unit has encountered a critical error requiring a system restart acquisition or power off and back on.
2. The LED will turn on solid yellow when the unit has recovered from an error during data acquisition. The data files headers must be examined, such as timing and save over run flag.

To clear the Error indicator LED while solid yellow:

1. Press the CONTROL + DISPLAY (On/OFF) Buttons for three (3) seconds.
2. Two (2) short audio beeps will be heard.
3. The Error indicator LED solid yellow will turn off.

**Note: If an error condition still exists, the error indicator led solid yellow will immediately turn back on.**

#### 6.3.02 Controls

##### 6.3.02.1 Power Button

Press the power button for three (3) seconds to power on the unit.

Press the power button for five (5) seconds to power off the unit.

When the unit powers up all indicators will light for 1 second and a short beep will be heard. The unit offset will be automatically compensated at this time.

##### 6.3.02.2 Acquire (Start/Stop) Button

###### Acquiring Data

When the unit is powered on, POWER indicator LED on solid green, when idle, System indicator LED flashing slowly (1 flash per second) green. First pressing of the Acquire (Start/Stop) button will put system in acquisition mode, system indicator start flashing quickly (4 flashes per second) green, pressing of the button again will stop data acquisition. In acquisition mode, the unit will start acquire and save data according to the configuration setup by user using acquisition software through USB or wireless. If the unit has not been configured by acquisition software since powered up, it will acquire and save data with the following default setting:

1. The sample frequency is set to 1 kHz
2. The gain for all channels is set to 1 for Gain 1 and 1 for Gain 2
3. Filter settings are as follows:
  - a. 20 kHz filter if a LEMI-118 is connected to a channel.
  - b. 1 kHz filter for all other types of sensors.
4. File allocation on the memory card will be as follows:
  - a. A folder under the root directory will be created with the current date and time.
  - b. The data files will be created under this folder with the name "data\_X" where X starts at 1 and will continue sequentially; the file limit is set to 65535.
  - c. Each file will be 23.5 MB long (approximately 20 minutes in length at sampling frequency of 1 kHz)

**Note: The unit will not save data if a memory card error is indicated, memory card indicator on solid red. Example, no memory card installed.**

Pressing the Acquire (Start/Stop) button when the unit is in acquire mode, system indicator flashing slowly (1 flash per second) green. The unit will stop acquiring data.

**Note: The unit defaults to the above configuration if the unit is powered down for any reason, including powering the unit off.**

#### 6.3.02.3 Display (On/Off) button

Pressing the Display (On/Off) will turn all the LED indicators on or off. Turning the LED indicators off will reduce power consumption and extend the battery operating time.

A short audio beep will be heard when this button is pressed.

#### 6.3.02.4 Keypad Lock Button

Press the Keypad Lock button for three (3) seconds will lock all the units top panel controls to prevent unauthorized personal from changing the unit status.

The unit may be unlocked by pressing the following button combination.

Press and hold the following:

KEYPAD LOCK + CONTROL + F1 for three (3) seconds, three (3) short audio beep will be heard.

#### 6.3.02.5 Memory Card Exchange Button

Pressing the Memory Card Exchange button will cause the following:

1. A short audio beep will be heard.
2. The current data file will be closed.
3. The Memory Card indicator LED will flash quickly (4 flashes per second) red to indicate the memory card can be exchanged.

Exchange the memory card as follows:

1. Loosen the thumb screw hold down the memory card cover.
2. Swing up the memory card cover.
3. Inspect the memory card cover gasket for any defects and replace if needed.
4. Press the Memory Card Exchange button.
5. Once the Memory Card indicator LED is flashing quickly (4 flashes per second).
6. Remove the installed memory card, see page 24.

**Note: The Memory Card indicator will turn solid red to indicate no memory card present.**

7. Insert the new memory card in the unit. The Memory Card indicator LED will flash green as the unit is writing to the memory card.
8. Reinstall memory card cover.
9. Tighten the thumb screw on the memory card cover.

**Note: Do not over tighten the thumb screw**

***Warning: The unit contains 256 megabits of on-board memory for memory card exchange. The time allowed for memory card exchange is based on the sample frequency of the unit at the time of exchange. At 100 kHz sample frequency, the time is 16 seconds. At 4 kHz sample frequency, the time is 7 ½ minutes.***

***If the exchange does not happen within the allowed time, data will be lost and the error indicator led will be solid yellow. The unit will still acquire data once a new memory card is installed but the data files headers must be examined to determine the amount of data loss.***

***If the memory card exchange does occur but is within 10 seconds of the on-board memory reaching its maximum limit, the unit will not determine memory card size but will immediately begin writing data to the memory card to prevent data loss. The unit will not be able to tell the percentage of free space left on the memory card. The memory card indicator led will not turn red to show memory card is greater than 90% full. The memory card size will be automatically determined whenever the acquisition is stopped.***

#### 6.3.03 F1, F2 and Control Buttons

The F1, F2 and Control buttons are auxiliary buttons used throughout this manual and/or reserved for future use.

#### 6.3.04 USB Port

The USB port on the top panel is under a weather proof self-closing cap. The unit can be connected to a computer to upgrade unit firmware, flash drive mode, and/or to acquire data. Connect the supplied A-A USB cable between the unit and a Microsoft Windows® based PC.

#### 6.3.05 Memory Card

The memory card slot is under a weather proof cover with a thumb screw to secure the cove to the top panel. A Secure Digital (SD) card is used with the unit. Any size and type of SD card may be used with the unit. A class 10 SD (30 MB/s) card is recommended for any application, especially with high sampling speed above 20KHz, to ensure fast writing of the data to the SD card. To determine whether a slow SD card has enough speed specification, the intended sampling rate and number of enabled channels can be used or simply put that card into unit to see whether saving buffer will continuously build up. A 16 MB class 10 card is provided with the unit. Install the SD card as shown in Figure 19. The SD card only fits in one direction.

***Warning: Forcing the SD card into the unit in the wrong direction can damage the unit and/or SD card.***

To remove the SD card from the memory slot, proceed as follows:

1. Momentarily press down on the memory card using a finger. .  
This will cause the memory card to push further into the memory card adapter, which will trigger a mechanism that will then push the memory card out far enough for you to remove the card.
2. Fully remove the memory card.



Figure 19 - SD card installation

#### 6.3.06 Internal Battery Charging Connection

**Note: The internal battery is shipped fully charged. KMS Technologies recommends you charge the unit fully prior to performing any operations with the unit.**

The internal battery charging connection is under a self-closing weather proof cover.

Carefully lift the cover and connect the supplied battery charger (Figure 20) as shown in Figure 21.

Ensure the battery charger pin is fully inserted to the battery charging connection.

The supplied battery charge input is rated for 100-250 VAC -10%, +6%, 47-63 Hz. The supplied power cable for the battery charger is for a 120 VAC 60 Hz electrical system.

The power cord connection needs to be an Ault#3 connector. Any power cord with the Ault#3 connector can be used to supply power to the battery charger.

The battery charger has both indicating lights and printed directions on the charger showing operations of the charger.



Figure 20 - Battery Charger



Figure 21 - Battery charger connected to the KMS-820

### 6.4 Monitoring and Acquisition Software

#### 6.4.01 Installation

The KMS-820 installation CD contains the operating software and drivers, processing software (if purchased), KMS-300 drivers, KMS-820 user manual and any additional user manuals for sensors purchased. Sensor user manuals are contained on the CD in the folder "User Manuals".

**Note: Do not connect the KMS-820 to the computer until directed.**

Install the software as following:

**Note: Install all software to the default directories. The program may not run correctly if installed to other directories.**

1. Insert the CD into the CD-ROM drive of your computer. The CD should start automatically. If the menu does not start, go to “Start” → “Run” and type in d:\setup.exe (where d: is your CD-ROM drive).
2. The AutoPlay window, Figure 22, may appear. Click on “Run Autorun.exe”.

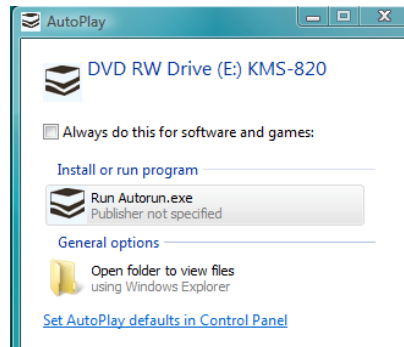


Figure 22 - AutoPlay window

3. The KMS-820 Setup window will appear, see Figure 23.

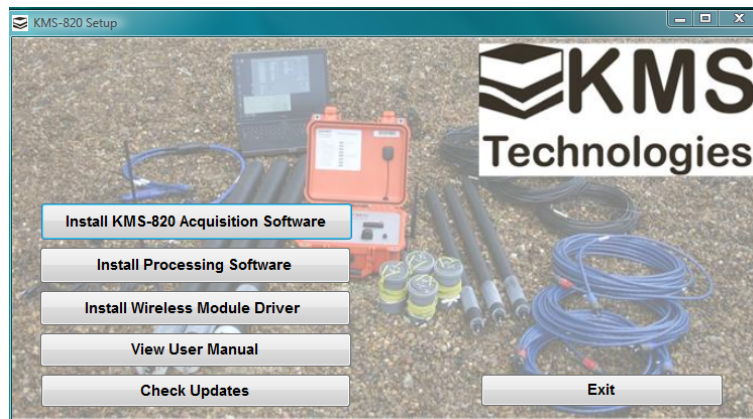


Figure 23 - KMS-820 Setup window

4. Click on “Install KMS-820 Acquisition Software” button. Follow the on-screen instructions to install the software. The software installs a shortcut icon for the KMS-820 software and user manual on the desktop.
5. Click on “Install Processing Software” button. Follow the on-screen instructions to install the software.
6. Click on “Install Wireless Module Driver” button if KMS-300 USB WIRELESS ADAPTER will be used. Follow the on-screen instructions to install the driver. The Windows Security window, Figure 25, may open depending on the security settings the user has applied to Windows®. Click on “Install this driver software anyway”.
7. Click on “View User Manual” to view the KMS-820 user manual. Adobe reader is required to view the user manual. Adobe reader can be downloaded from <http://get.adobe.com/reader/>.
8. Click on “Check Updates” button to check for firmware or software updates.
  - a. Updates for the KMS-820, KMS-200 MT Processing software (including sensor configuration file and KMS-300 drivers are maintained on the KMS Technologies website in a secure sub-web. Contact KMS Technologies for user name and password at [info@kmstechnologies.com](mailto:info@kmstechnologies.com).
9. Click on “Exit” button to exit the KMS-820 Setup window.

#### 6.4.02 Description and Operation

The KMS-820 can be controlled either using the supplied USB A-A cable or with the KMS-300 USB WIRELESS ADAPTER.

#### 6.4.02.1 Connecting the KMS-820 to PC via USB A-A cable

1. Connect the KMS-820 unit to a PC with the supplied USB A-A cable to the USB port on the top panel, see page 24.
2. Power on the unit, see page 22.
3. The computer will discover new device and attempt to install drivers. The Found New Hardware window will open, see Figure 24. Click on “Don’t show this message again for this device”. The window may appear twice.

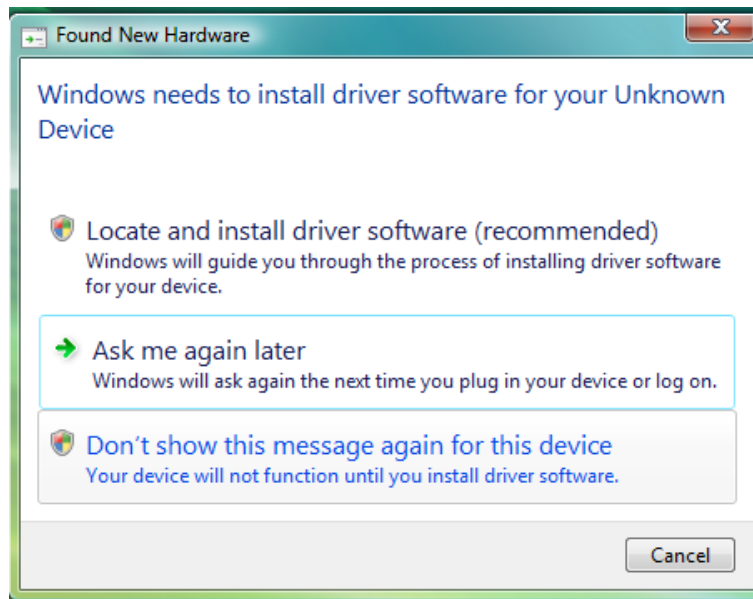


Figure 24 - Found New Hardware window

4. Start the Acquisition and Monitoring software by performing step 1.c in section 6.4.02.3 below. The Windows Security window, Figure 25, based on the security setting the user has applied to Windows®. Click on “Install this driver software anyway”, see page 10

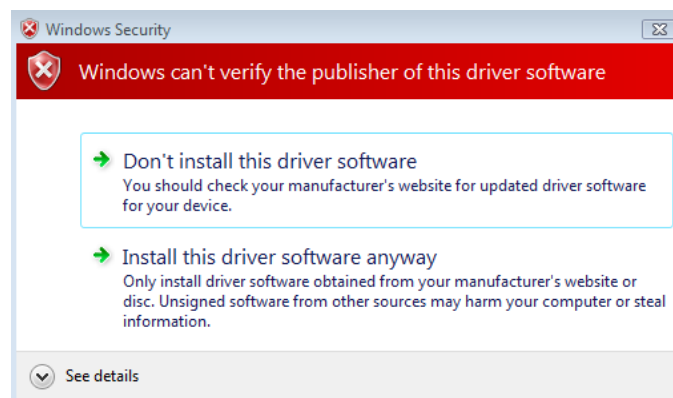


Figure 25 - Windows Security window

#### 6.4.02.2 Connecting the KMS-820 to PC via KMS-300 USB WIRELESS ADAPTER

1. Connect the KMS-300 to a PC with the supplied USB A-B cable. Ensure drivers are installed as section 6.4.01 above.
2. Start the KMS-820 Acquisition and Monitoring software by performing step 2.c in section 6.4.02.3 below.
3. Once the software is started and the initial communication port is selected for wireless adapter, communication with the unit will need to be initiated from the Wireless Network window, see page 38.

#### 6.4.02.3 Starting the Acquisition and Monitoring software

1. To control the unit with the USB cable:
  - a. Power up the unit.
  - b. Connect the USB A-A cable.
  - c. Start KMS-820, either from the desktop shortcut, Figure 26, or from the Windows® Start Menu – All Programs – KMS Technology – KMS-820, Figure 27.
2. To control the unit with the KMS-300 USB WIRELESS ADAPTER:
  - a. Verify the KMS-300 drivers have been installed per the above procedure.
  - b. Power up the unit.
  - c. Start KMS-820 Acquisition Software, either from the desktop shortcut, Figure 26, or from the Windows® Start Menu – All Programs – KMS Technology – KMS-820 Acquisition Software, Figure 27.



Figure 26- Desktop shortcut

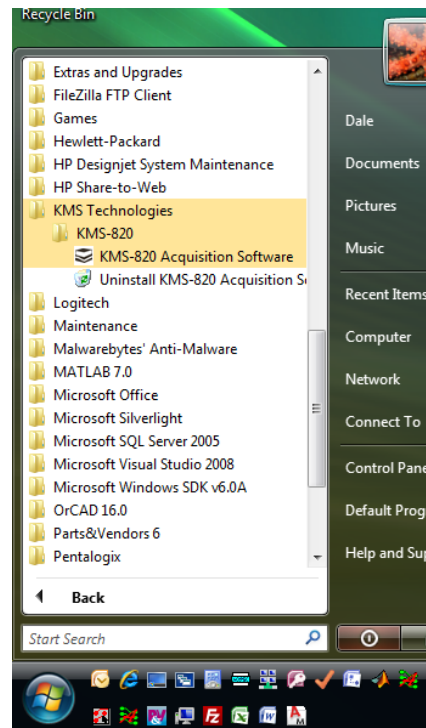


Figure 27 - Start menu location

The KMS-820 can be controlled via the USB cable with the KMS-300 adapter connected to the computer, see the next section for selecting the correct communications port.

**Note:** When the user sends a command either USB or wirelessly the KMS-820 acknowledges the command. If the command is not acknowledged by the KMS-820 a communication error window will open,



#### 6.4.02.4 Initial Communications Port window.

Once the acquisition and monitoring software is started, any additional drivers will be installed if required.

**Note:** Additional windows may appear depending on the windows security settings applied, select “install this driver software anyway”; if the windows security window is displayed see Figure 28.

**The software has been tested extensively with Microsoft Windows® XP, Vista and 7 in both 32 and 64 bit versions.**

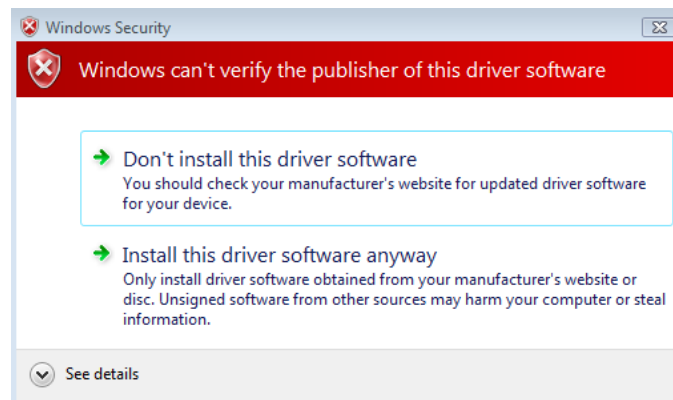


Figure 28 - Windows Security window

The communication port windows, Figure 29, will then be displayed. Choose the serial port for the connection type being used.

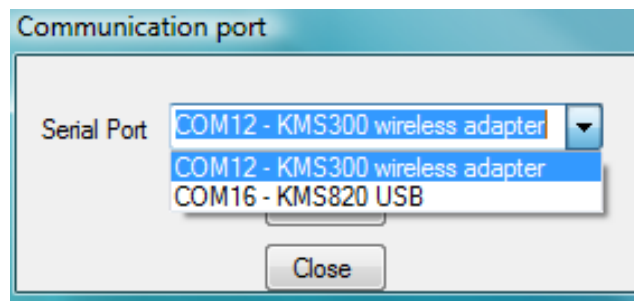


Figure 29 - Communication port window

A window verifying if the connection was made or not made will be displayed.

If communication with either the KMS-300 or KMS-820 is not established, see the troubleshooting section of this manual.

Close this window if you do not need to communicate with the unit but do need to perform software tool operations, binary to ASCII conversion, merging binary files or data processing. See page 42 for complete description of these operations.

**Note:** Commands sent to the KMS-820 either USB or wirelessly are acknowledged by the KMS-820. If the KMS-820 did not receive a command the Communications error window, Figure 30, will open. If a communication error is received the user must send the last command again to the KMS-820. No indication is made to the user if a command to the KMS-820 is acknowledged.

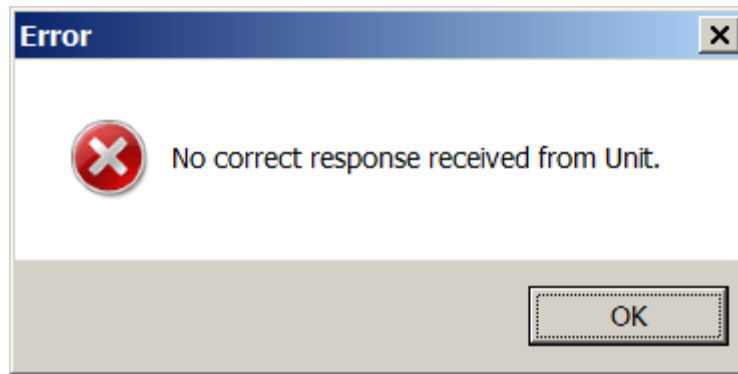


Figure 30 - Communications error window

#### 6.4.02.5 Main Control Window (Figure 31)

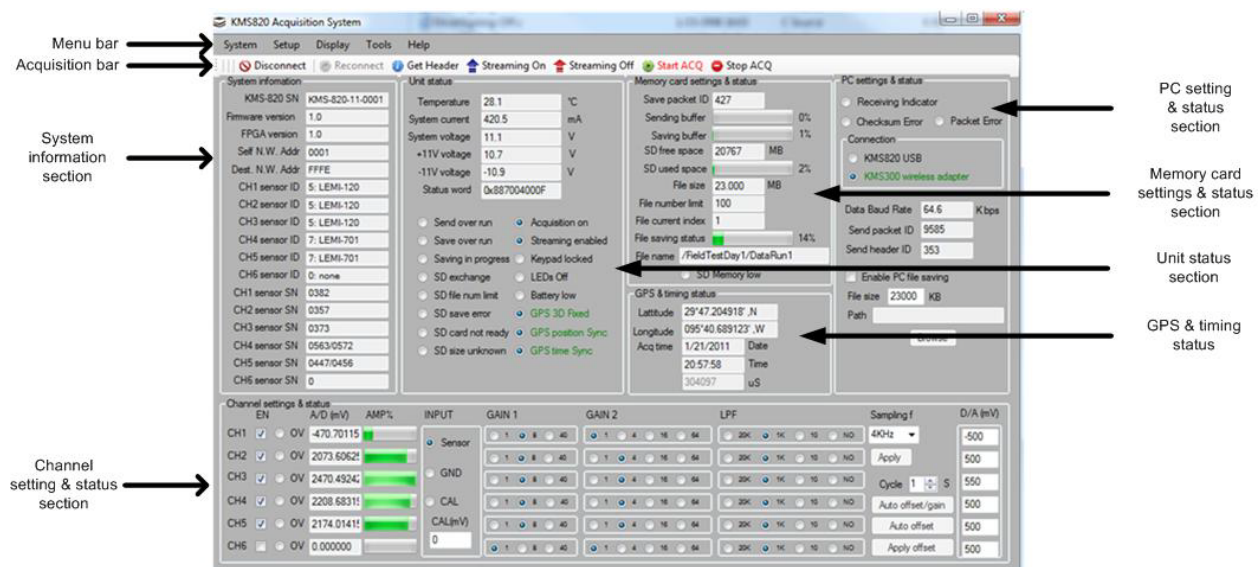


Figure 31 - Main control window

The main control window is divided in the following sections:

1. System information section.
2. Unit status section.
3. Memory card settings and status section.
4. GPS & timing section.
5. PC settings & status section.
6. Channel settings and status section.
7. Acquisition bar.
8. Menu bar.

## 6.4.02.5.1 System information section (Figure 32)

System information	
KMS-820 SN	KMS-820-11-0001
Firmware version	1.0
FPGA version	1.0
Self N.W. Addr	0001
Dest. N.W. Addr	FFFE
CH1 sensor ID	5: LEMI-120
CH2 sensor ID	5: LEMI-120
CH3 sensor ID	5: LEMI-120
CH4 sensor ID	7: LEMI-701
CH5 sensor ID	7: LEMI-701
CH6 sensor ID	0: none
CH1 sensor SN	0382
CH2 sensor SN	0357
CH3 sensor SN	0373
CH4 sensor SN	0563/0572
CH5 sensor SN	0447/0456
CH6 sensor SN	0

Figure 32 - System information section of the main control window

The following information is displayed:

1. The unit serial number.
2. The micro-controllers current firmware revision.
3. The FPGA current firmware revision.
4. The unit network address, see page 38 to set the units network address.
5. The wireless adapters network address, see page 38 to set the adapters network address.
6. The sensors' model number, see page 37 to select the sensors attached to the unit.
7. The sensors' serial number, see page 37 to set the sensors' serial numbers.

***Warning: The model of sensor and serial numbers must be correctly set or the MT Processing software will not be able to correctly processes the data obtained from these sensors. Contact KMS Technologies if the sensors being used for data acquisition were not issued from KMS Technologies or not shown in the system information window, see page 37.***

## 6.4.02.5.2 Unit status section (Figure 33)

Unit status	
Temperature	28.1 °C
System current	420.5 mA
System voltage	11.1 V
+11V voltage	10.7 V
-11V voltage	-10.9 V
Status word	0x887004000F
<input type="radio"/> Send over run	<input checked="" type="radio"/> Acquisition on
<input type="radio"/> Save over run	<input checked="" type="radio"/> Streaming enabled
<input type="radio"/> Saving in progress	<input type="radio"/> Keypad locked
<input type="radio"/> SD exchange	<input type="radio"/> LEDs Off
<input type="radio"/> SD file num limit	<input type="radio"/> Battery low
<input type="radio"/> SD save error	<input checked="" type="radio"/> GPS 3D Fixed
<input type="radio"/> SD card not ready	<input checked="" type="radio"/> GPS position Sync
<input type="radio"/> SD size unknown	<input checked="" type="radio"/> GPS time Sync

Figure 33 – Unit status section of the main control window

The following information is displayed:

1. Temperature - The unit's internal temperature.
2. System current - The system current the unit is drawing including any sensors connected to the unit.

3. System voltage - The unit's supply voltage, this should be between 7.5 V to 32 V.
4. +11V voltage and -11V voltage - The +/- 11Vdc supplied as Table 2 at the Analog Input Connectors C-1 and C-2; these voltages are also used by internal channel amplifiers
5. Status word is used by KMS Technology technicians when troubleshooting the unit.
6. Send over run – will indicate the unit's internal send buffer is full. The percentage of send buffer memory being used is shown in the memory card settings and status section of the main control window, see page 33. This error will happen when the sampling data rate is more than the USB/wireless bandwidth, but it will not affect the correct data saving to the SD card.
7. Save over run – will indicate the unit's internal save buffer is full and a PC memory file error has occurred. See page 49 for memory card errors and recommended actions. The percentage of save buffer memory being used is shown in the memory card settings and status section of the main control window, see page 32.
8. Saving in progress – will indicate the unit is writing to the memory card. This indicator is tied to the Memory Card Indicator LED on the top panel of the unit.
9. SD exchange – memory card exchange is in progress, see page 23.
10. SD file limit – the file number limit as defined as shown on page 33 has been reached. This does not affect the unit's data acquisition mode but, the unit is no longer writing data files to the memory card. The unit will continue to acquire and send data to PC through USB/wireless. PC may still be writing data files to the PC, see page 34.
11. SD save error – The unit can not write to the memory card. See troubleshooting section of this manual.
12. SD card not ready – The memory card is not installed or initiated yet in the unit.
13. SD size unknown – The unit can not tell the size of the memory card installed. See note on page 24. If this warning occurs, the percentage SD used as shown in the memory card settings and status section of the main control window will not be updated. This will also prevent the Memory Card Indicator on the top panel from indicating the percentage of memory card used. But the space used to save data is still continuously updated. Whenever acquisition stops, the unit will detect the size of the SD card and this warning should then disappear.
14. Acquisition on – The unit is in data acquisition mode, the unit is acquiring data.
15. Streaming enabled - The unit is enabled to stream data either wirelessly or via the USB during acquisition. See page 36 for more information.
16. Keypad locked – The unit's keypad is locked. See page 23.
17. LEDs Off – The unit's display is off. See page 23.
18. Battery low – The unit's battery is < 8Vdc. See page 21.
19. GPS 3D Fixed – The unit's GPS system is locked and valid.
20. GPS position Sync – The unit's GPS system has a valid position.
21. GPS time Sync – The unit's GPS system has a valid time.

#### 6.4.02.5.3 Memory Card settings & status section (Figure 34)

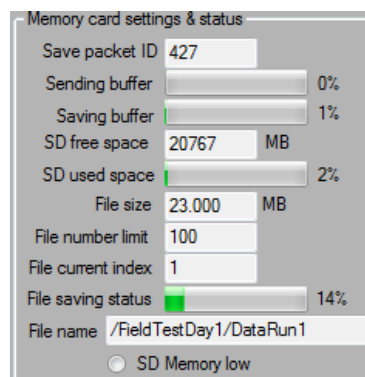


Figure 34 - Memory card settings & status section of the main control window

The following information is displayed:

1. Save packet ID – Sequential number from the time the unit is powered on representing each data packet saved to the memory card.
2. Sending buffer – Progress bar showing the used percentage of the unit's internal sending buffer. It represents the amount of data in the unit's internal sending buffer which is waiting to be sent to PC through USB/wireless.
3. Saving buffer –Progress bar showing the used percentage of the unit's internal saving buffer. It represents the amount of data in the unit's internal saving buffer which is waiting to be saved to the unit's memory card.
4. SD free space – The memory card's free space in MB.
5. SD used space – Progress bar showing the percentage of the memory card's free space.
6. File size – The binary data file size as defined by the user on page 39.
7. File number limit – The total number of data files to be written to the memory card as defined by the user on page 39.
8. File current index – The current file number being written to the memory card.
9. File saving status – Progress bar showing the percentage of the current binary data file being written to the memory card.
10. File name – The binary data file name as defined by the user on page 39.
11. SD Memory low – Indication that the memory card is > than 90% full.

#### 6.4.02.5.4 GPS & timing section (Figure 35)

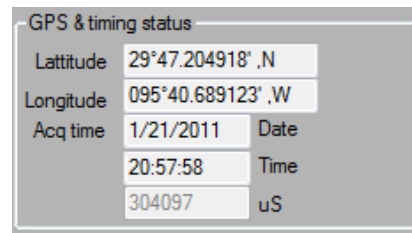


Figure 35 - GPS & timing section of the main window

The following information is displayed:

1. Latitude and Longitude – The unit's current latitude and longitude if known by the system. See page 19 for more information on setting up the unit's GPS system.
2. Acq time – It gives the instant acquisition time of the current sampling data. This time is normally initialized by the unit's GPS system but can be sent from the controlling PC if GPS time is not available, See page 39 on how to send the PC time.

#### 6.4.02.5.5 PC settings & status section (Figure 36)

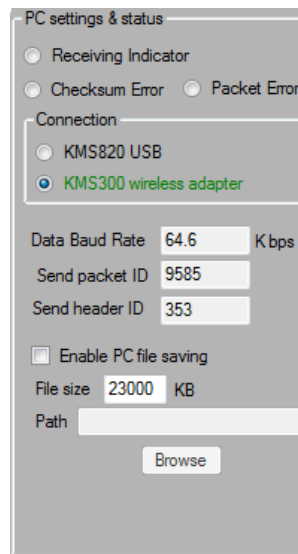


Figure 36 - PC settings & status section of the main window

The following information is displayed and can be set:

1. Receiving Indicator – The PC is receiving valid information from the unit via USB or wireless.
2. Checksum Error – Data packet checksum error during receiving of data packet from the unit.
3. Packet Error – The Data packet received does not match expected header flags.
4. Connection – The type of connection the program is using to communicate with the unit, either via wireless or USB.
5. Data Baud Rate – The actual data baud rate PC receives data from the unit either via wireless or USB.
6. Send packet ID - Sequential number, from unit power on, of the number of packets sent from the unit.
7. Send header ID – Sequential number, from unit power on, of the number of headers sent from the unit.
8. Enable PC file saving – Enables saving of data files in binary format to a PC either wirelessly of USB; this file has the same format as the file saved in SD card, if there is no data over run or communication error occurred during saving.

**Note: Data files saved to the PC via USB or wireless will have errors if send data over run occurs which happens when the sampling data bandwidth is more than the communication bandwidth. USB connection has bandwidth up to 2.8 Mbit/s and wireless has bandwidth up to 80 Kbit/s, depending on the situation. Data saving to PC in this manner is not recommended for processing.**

9. File size – Data file size for PC file saving in KB.
10. Path – This is where the PC data files are being saved. Use the browse button to set the file location. The file is saved with a \_#, beginning with 1, with extension .binary. Once the file size is reached as set by the user in step 9 above, the file will be closed and a new file with the next sequential number extension will be opened. Example – file name “PCDataFile”, the first data file is “PCDataFile\_1.binary” next “PCDataFile\_1.binary, ...till data acquisition is stopped by the user.

**Note: Streaming data files to PC will increase unit power consumption.**

## 6.4.02.5.6 Channel settings and status section (Figure 37)

Figure 37 - Channel settings &amp; status section of the main window

The following information and settings are used to program the unit's six (6) input channels:

1. EN – Determines if the channel is enabled. The channel must be enabled for the unit to record data from that channel. The “Apply” button must be pressed to save selected settings to the unit.
2. OV – Over range. The input is over the range of the channel. Reduce gain settings to clear this error.
3. A/D (mV) – the signal voltage which the 24-bit A/D reads from each channel
4. AMPS % - A bar representation of the ratio of channel's current amplitude to the maximum amplitude.
5. Input – Determines where the input of each channel is connected internally, The “Apply” button must be pressed to save selected settings to the unit:
  - a. Sensor – The input of the channel is connected to the sensor.
  - b. GND – The input of the channel is connected to ground. This is used to determine noise levels of the system and by KMS Technologies' technicians for troubleshooting.
  - c. CAL – The input is connected to an internal function generator used by KMS Technologies' technicians for troubleshooting.
6. GAIN 1 – The first stage gain settings for the channel. The options are 1, 8 and 40, selected by the user to increase the signal gain of each channel. During field testing, the gain of each channel must be set for the current survey conditions. Increase the gain of this stage as much as possible within system dynamic range can most effectively increase signal/noise ratio. The “Apply” button must be pressed to save selected settings to the unit.
7. GAIN 2 - The second stage gain settings for the channel. The options are 1, 4, 16 and 64. Selected by the user to increase the signal gain of each channel. During field testing, the gain of each channel must be set for the current survey conditions. The offset compensation is applied between the first and second gain stage. The “Apply” button must be pressed to save selected settings to the unit.
8. LPF – Low pass filter settings. Selected by the user to apply a low pass analog filter onto signal for each channel. The options are 20 kHz, 1 kHz, 10 Hz and None. The “Apply” button must be pressed to save selected settings to the unit.
9. Sample f – Sample frequency. Selected by the user to determine sample frequency in Hz. The “Apply” button must be pressed to save selected settings to the unit.
10. Auto offset – Click this button to compensate the DC offset of each channel; gain will NOT be changed during this compensation process;
11. D/A (mV) - Digital to analog offset settings for each channel. These values can be set manually in each box. The “Apply offset” button must be pressed to save selected offsets to the unit.
12. Auto offset/gain – Click this button to let the unit start the process to determine and set the best gain and D/A offset settings for each channel; it is recommended to use this function at least once before acquisition to maximize the gain within its dynamic range. Then user can manually adjust the gains if necessary.

**Note:** Prior to using the Auto offset /gain function the user must set the sample frequency to 1kHz and the LPF for all enabled channels to 1kHz, ensure you apply the setting. After the Auto offset/gain is completed the user may then set the sample frequency and LPF setting to the user's needs. This



**prevents 50/60 Hz noise saturations of the channels and will be implement in the next software revision.**

13. Cycle – This specifies the sampling duration during auto offset or gain process and its default value is 1 second; this sampling duration should be more than the time for the signal to change from minimum to maximum amplitude.

**Notes: “Apply” button only needs to be pressed once after all the channel settings (the settings at the left side of this button) are selected. Start acquisition or Get header to verify that settings are applied to the unit.**

#### 6.4.02.5.7 Acquisition bar (Figure 38)

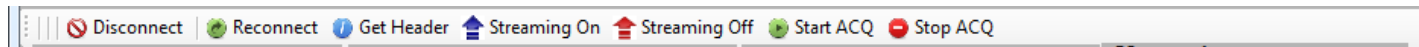


Figure 38 - Acquisition bar

The following controls are available from the acquisition bar:

1. Disconnect - Disconnects the communications port either wireless or USB from the main window user interface. The unit can not be updated and the main window interface will not be updated with any information.
2. Reconnect – Reconnects the main window interface with the last communications port selected. See page 39 to change current communications port.
3. Get Header – Updates the main window interface information from the unit’s header information; this can be used to verify status of the unit after “Apply” settings to the unit; Header information is still available during acquisition if data streaming is disabled.
4. Streaming On – Allows data streaming during acquisition either via wireless or USB from the unit to the interface for real time check of data or PC data file saving.

**Note: Enabling data streaming will increase power consumption and decrease the operating time of battery; disable data stream is a power saving method to increase time between battery changes.**

5. Streaming Off – Disables data streaming.
6. Start ACQ – Starts data acquisition
7. Stop ACQ - Stops data acquisition.

#### 6.4.02.5.8 Menu bar (Figure 39 & Figure 40)



Figure 39 - Menu bar for the main window

The menu bar gives access to all sub menus and allows programming of the system for data acquisition. The menu bar has the following submenus as show in Figure 40.

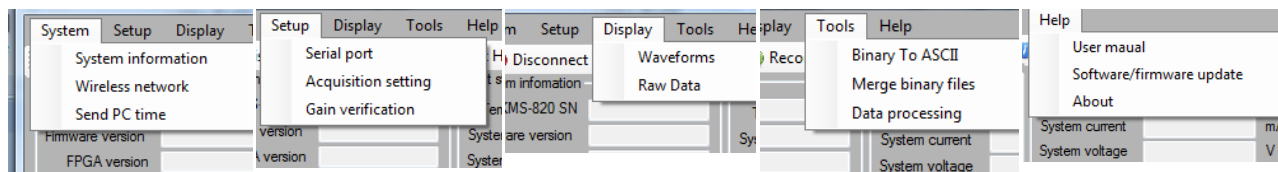


Figure 40 - Menu bar and submenu options



## 6.4.02.5.8.1 System submenu

The system submenu is divided into the following:

## 1. System information

Selecting the “System information” on the system submenu opens the System information window as shown in Figure 41.

	Sensor ID	Sensor SN	Component	Orientation (0°-359°)	Sensor Distance (0-65535) m
CH1	5: LEMI-120	0382	X	0	0
CH2	5: LEMI-120	0357	Y	90	0
CH3	5: LEMI-120	0373	Z	0	0
CH4	7: LEMI-701	0536/0572	X	0	100
CH5	7: LEMI-701	0447/0456	Y	90	100
CH6	0: none	0		0	0

User comments (107 characters available)  
MT Survey Data Run #1

Read Detect Apply Close

Figure 41 - System information window

The system information window is where the sensor information of the system is entered.

1. KMS820 SN – Shows the current connected unit’s serial number. This can not be changed.
2. KMS Network address – This is a user defined Hex number 0001-FFFE. User can define the unit’s network address for wireless communications with the KMS-820 units. The unit’s network address is preprogrammed as the last four (4) digits of the unit’s serial number.
3. The Sensor ID, sensor model, is selected. The following options are available:
  1. 0:None
  2. 1:unknown coil
  3. 2:unknown electrode
  4. 3:specific sensor
  5. 4:LEMI-118
  6. 5:LEMI-120
  7. 6:LEMI-121
  8. 7:LEMI-701
4. The Sensor SN - Enter the sensors serial number. KMS Technologies recommends that this be a four (4) digit or higher number, example S/N 14 entered as 0014. Electrode serial numbers are entered as matched pairs as show in Figure 41. The SN can be up to 16 characters.
5. Component – The X, Y, Z axis component designation of the sensor. For example, LEMI-120 S/N 0382 is connected to channel 1 and is orientated north to south and is the

X axis component for the coil, the LEMI-701 SN 0563/0572 matched pairs of electrodes are connected to channel 4 this is the X axis component for the electrodes of the survey.

6. Orientation – This is the magnetic direction the sensor is pointing. For electrodes, this is the electrode connected to the positive (+) terminal of the KMS-110 cable for electrode 1, see Figure 9.
7. Sensor Distance – Distance between electrodes of a matched pair set.
8. User comments – Any user comments up to 128 characters.

**Note: All the above information is written to the data header in the data files. It is also used by the processing software for calculations and calibration.**

9. Read – Read the system information saved in the unit.
10. Detect – Automatically detect the Sensor ID connected to the unit.
11. Apply – Saves the entered information to the unit internal flash memory; these information is still preserved even with system power off.
12. Close – Closes the System information window.

***Warning: The model of sensor and serial numbers must be correctly set or the MT Processing software will not be able to correctly process the data obtained from these sensors. Contact KMS Technologies if the sensors being used for data acquisition were not issued from KMS Technologies or not shown in the system information window.***

## 2. Wireless network

Selecting the “Wireless network” on the System submenu opens the Wireless network window Figure 42.

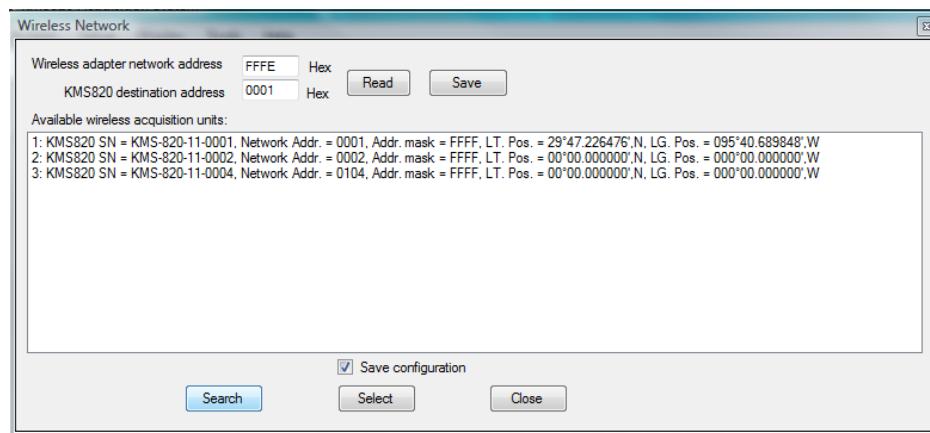


Figure 42 - Wireless network window

The wireless network window is the control interface for the wireless adapter.

1. Wireless adapter network address – This is a user defined field. Sets this four (4) digit, 0001-FFFE hex number to define the wireless network adapter’s network address.
2. KMS820 designation address – Sets the KMS-820 network address for the unit you would like to control.
3. Read – Reads the saved information from the currently connected wireless network adapter.

**NOTE: A wireless network adapter must be defined as the currently connected communications port adapter, not connected as USB. See page 39 for changing the communications port.**

4. Save – Saves the above information to the currently connected wireless network adapter so that it can communicate with current destination unit without wireless set up
  5. Available wireless acquisition units: - Shows the currently available KMS-820 units that may be connected to the main window interface panel. The unit is selected by clicking on the unit in the window.
  6. Search – Pressing the Search button will search for KMS-820 units that are available for wireless control.
  7. Save configuration – When “Select” button is clicked, saves all the KMS300 adapter information to the currently selected unit flash memory so that the adapter can directly communicate with this unit without wireless network set up.
  8. Select – Pressing the Select button will selected unit, this unit must be selected in the available wireless acquisition unit’s window; the KMS820 destination address will be updated with this selected unit’s network ID.
  9. Close – Close the Wireless network window.
3. Send PC time

Selecting the “Send PC time” on the System submenu will send the connected PC system time to the connected unit’s system clock.

**NOTE: GPS time will always update the units system time. Use this option if the unit’s GPS system can not receive GPS information.**

#### 6.4.02.5.8.2 Setup submenu

The setup submenu is divided into the following:

1. Serial port

Selecting the “Serial port” on the Setup submenu opens the communications port window, as shown in Figure 29. This is the same window that opens when the Acquisition and Monitoring software is started, see page 29. This window allows you to change between UBS connections and wireless connections without exiting the program.

2. Acquisition settings

Selecting the “Acquisition settings” on the Setup submenu opens the Acquisition setup window, Figure 43.

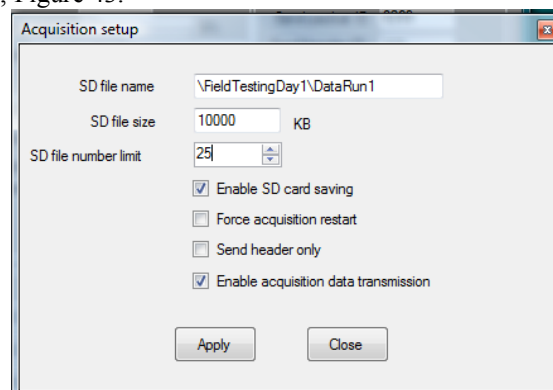


Figure 43 - Acquisition setup window

The Acquisition set up window is the interface for controlling the data acquisition mode and setting the memory card settings.

1. SD file name – This is where the data file name is defined. The data files will follow the name defined here. The format is /FolderName/FileName or /Filename if you do not want to save in a subfolder. The data file will be named FileName\_#, where # is sequential number starting at 1 and going to SD file number limit.
2. SD file size – User defined size of each data file saved to the memory card in KB. It is automatically limited from 500KB to 32000 KB and round the number to multiple number of data blocks (92 pages/block, 512 byte/page). Please see appendix for more information about data block.
3. SD file number limit – This is the total number of data files the user wants to write to the memory card for a given acquisition. The unit will write data files according to the SD file size and the total SD file number limit. For example, in Figure 43, DataRun1 file will have 25 files: DataRun1\_0 to DataRun1\_24, each is 23,000 KB big. Once the file number limit is reached, the unit will still be in acquisition mode and acquiring data but no more data files will be written to the memory card and the SD file num limit radio button on Figure 33 will indicate that this limit has been reached.
4. Enable SD card saving – This option must be enabled for all data files to be saved to the memory card.
5. Force acquisition restart – When “Force acquisition restart” is not enabled, the unit will continue acquisition without stopping acquire first when a new command to Start Acquisition is received from PC and the acquisition software can monitoring acquisition process which was started earlier without disturbing current acquisition; if “Force acquisition restart” is enabled, the Start Acquisition will stop current acquisition if it is already in acquisition mode and restart a new acquisition sequence.
6. Send header only – This option allows sending header information only during data acquisition. This option can be used if you want to continuously monitor the unit and receive only header information without data.
7. Apply – Saves the above information to the unit. When “Apply” button is clicked, the total size of files and the amount of acquisition time to finish all the files are given based on sample rate and number of channels enabled.
8. Close – Closes the Acquisition setup window.

### 3. Gain verification

Selecting the “Gain verification” on the Setup submenu opens the Gain verification window, Figure 44.

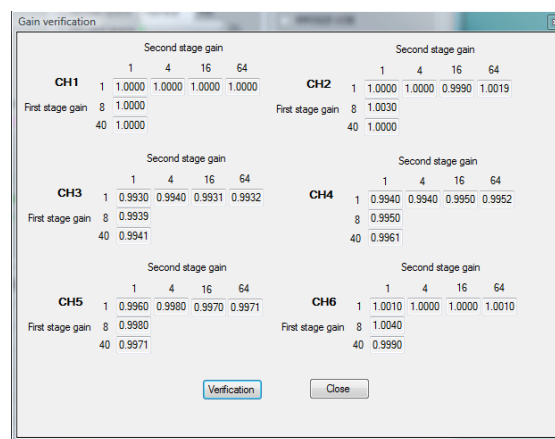


Figure 44 - Gain verification window

The Gain verification window is used to verify that the unit is working correctly. This should not be done when the unit is acquiring data. Select the Verification button will cause the unit to enter maintenance mode and verify the all gain setting in all channels. Once completed all values should be between 0.9800 and 1.0200, if any values are outside this range contact KMS Technologies for assistance. This feature can be used before going for a field survey to briefly verify that the system is working properly.

#### 6.4.02.5.8.3 Display submenu

The display submenu is divided into the following:

##### 1. Waveform

Selecting the Waveform on the Display submenu opens the Real-time waveform window, Figure 45. This window allows the user to display real-time signals from data received from the unit. The unit must be in acquiring mode and data streaming must be enabled for waveforms to be displayed.

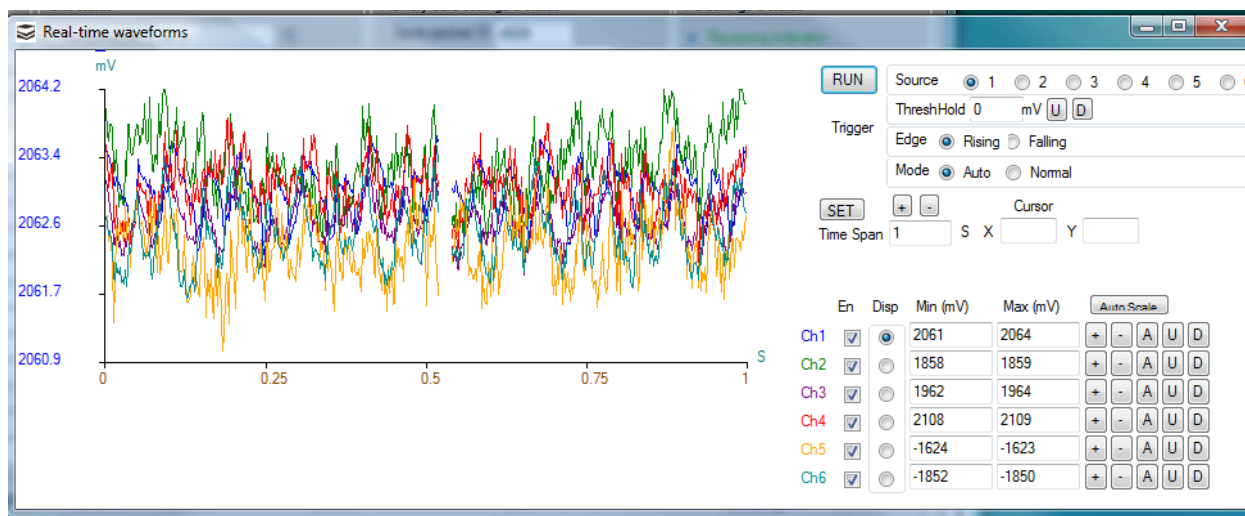


Figure 45 - Real-time waveforms window

The Real-time waveform window acts as a basic oscilloscope.

1. RUN/ STOP – The Run button starts the display and changes to a STOP button which allows you to stop the waveforms at any time, this does not affect data acquisition. When display is stopped, the cursor can be placed on any point of the waveform (selected from Disp) to show its amplitude displayed in X and Y fields.
2. Trigger setting – Like an oscillator scope, this real-time waveform display can be triggered by Auto mode or Normal mode; in Auto mode, the waveforms are continuously displayed whenever new sampling data are available; in Normal mode, a new frame of waveforms start to display only when the signal of the specified channel (under Source selection) reaches Thresh Hold level at specified edge (Rising or Falling Edge). Normal mode is used to synchronize the display of rapidly changing signals to have stable display.
3. SET – The user can manually enter time span to be displayed. Enter the desired time in seconds in the Time Span window and press SET.
4. + / - - These buttons can also be used to increase / decrease the period displayed.
5. Cursor X / Y windows – With the display stopped select any wave form, right mouse button click, the X and Y data points from the display are shown.
6. Auto Scale – Auto scale of all channels.
7. EN – Allow the user to decide which channels waveform is displayed

8. Disp – Determine which channel scale is displayed.
9. Min (mV) / Max (mV) – Max and min of each channel displayed.
10. + / - - Increase or decrease voltage range.
11. A – Auto scale individual channels.
12. U / D – Raises or lowers individual channel wave forms, changes the offset displayed.

## 2. Raw data

Selecting the Raw data on the Display submenu opens the Communications Log window, Figure 46.

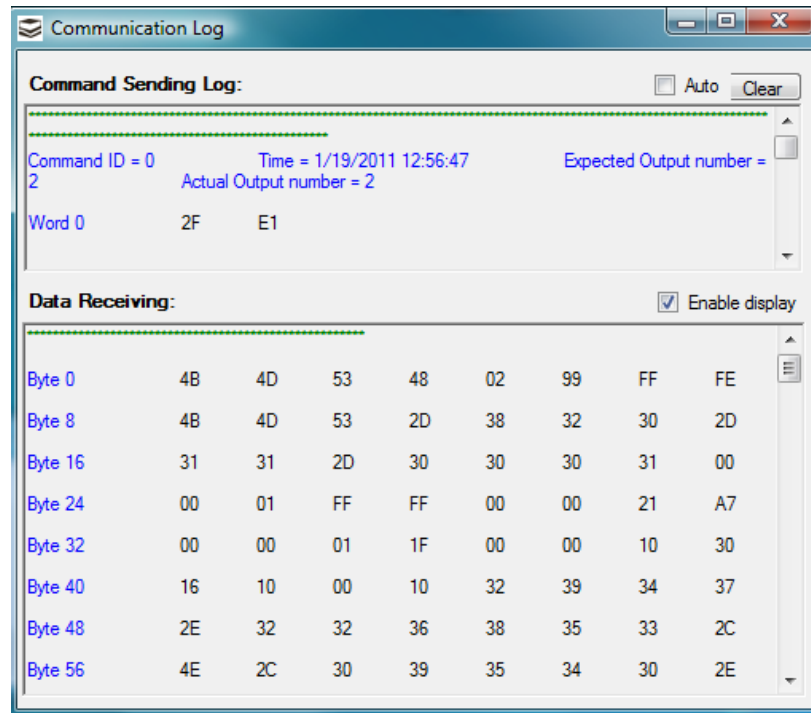


Figure 46 - Communication Log window

The Communications Log Window is a running display of raw data used by KMS Technologies technician to troubleshoot the unit.

### 6.4.02.5.8.4 Tools submenu

The Tools submenu is divided into the following:

#### 1. Binary to ASCII

Selecting the Binary to ASCII on the Tools submenu opens the Binary to ASCII conversion window, Figure 47. This window allows the user to convert binary data files, those recorded on the memory card to ASCII format. This ASCII file can be directly read by MATLAB® for processing.

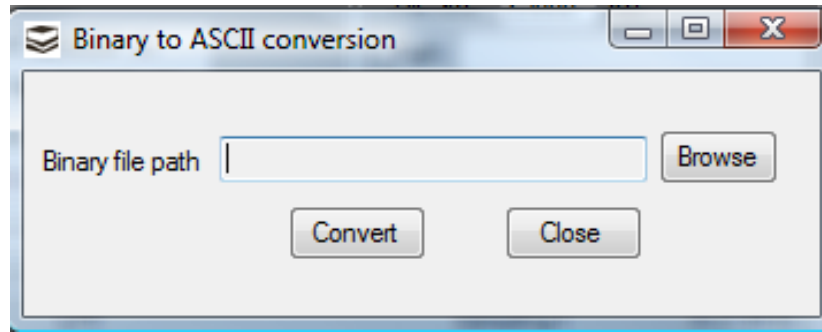


Figure 47 - Binary to ASCII conversion window

1. Binary file path window – This window is the file(s) to be converted.
2. Browse – Allow the user to open a standard Microsoft Windows® window and select a file or files to be converted.

**Note: The files are converted sequentially as selected and are named in order. Example the binary files selected for conversion are datarun1\_0, datarun1\_1, datarun1\_3, datarun1\_2, note not in correct order. The system will convert the files to datarun1\_0\_ascii, datarun1\_1\_ascii, datarun1\_2\_ascii, datarun1\_3\_ascii but datarun1\_2\_ascii will be the data from datarun1\_3 binary file. Select files in sequence order or do the individually.**

3. Convert – Converts the binary files to ASCII files with –ASCII extension added to the data files in the same folder.
4. Close – Closes the Binary to ASCII conversion window.

## 2. Merge binary files

Currently, the MT Processing software can work on one file a time (multiple files processing will be added in future processing software release). The tool to merge the binary time series files is provided to combine multiple files together for data processing purpose. All the merged files have to be in one acquisition so that the sampling is continuous without time gap. In addition, it provides the utility for user to check the integrity of the binary files before processing the data. This utility reads back the headers, data blocks and checks the timing between each block. Selecting Merge binary files from the Tools submenu will open the Merge binary files window, Figure 48. This window allows the user to convert sequential binary file into a large binary file for processing.



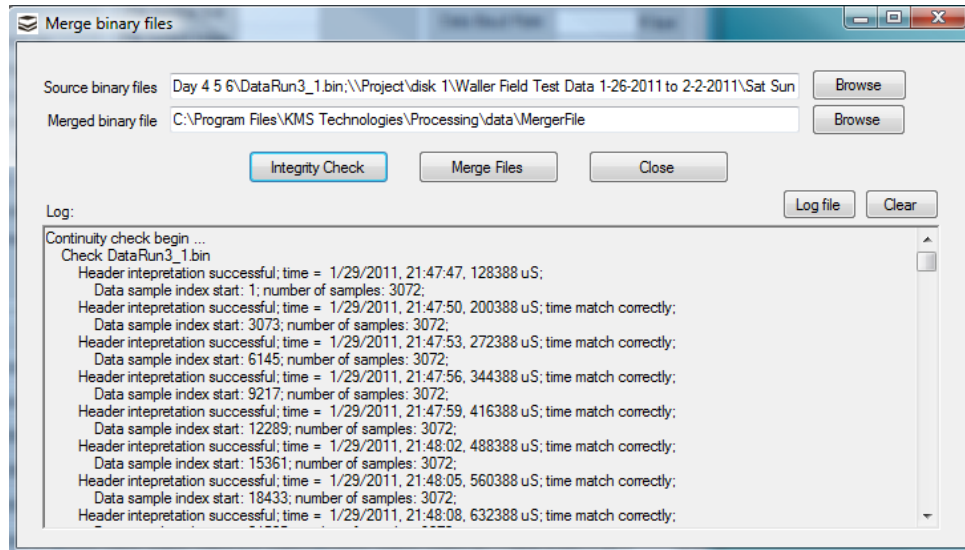


Figure 48 - Merge binary files window

1. Source binary files path – This textbox is the file(s) to be merged/checked.
2. Browse – Allow the user to open a standard Microsoft Windows® window and select a file or files to be merged/checked. Please make sure the files are selected sequentially according to their acquisition time.
3. Merged binary file path window – This window is the output file name and path of the merged binary files.
4. Browse – Allows the user to open a standard Microsoft Windows® window and select the output file.
5. Integrity Check – The checks the binary time series data files for integrity and correct time sequencing. Pressing the Integrity check button will check the selected files in the source binary files path textbox sequentially. The result of the integrity check is displayed in the Log window. When the integrity check is completed a window will open showing the check was completed successfully, Figure 49, or stating that errors have occurred, Figure 50. If errors have occurred the log file must be checked prior to merging files. User needs to make sure that the merged files are continuous in their time sequence by checking the integrity result.

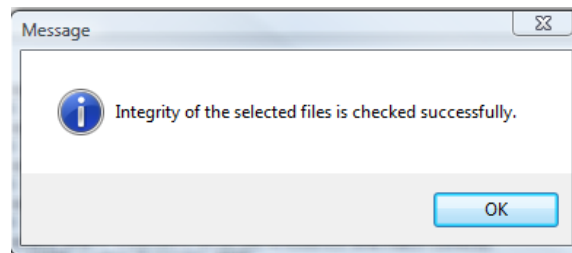


Figure 49 - Integrity check successful window



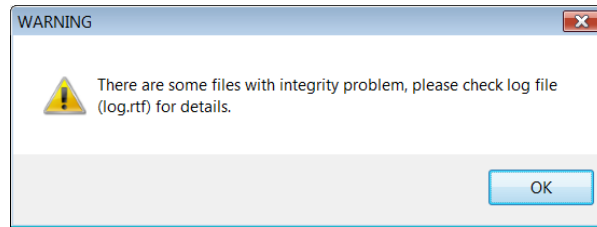


Figure 50 -Integrity check error window

6. Merged files – Merges the files listed in the Source binary file path window into the file listed in the Merged binary file path window.
7. Close – Closes the window.
8. Log file – Opens the log file, allowing the user to determine data file errors. The displayed log window is saved as a log file each time when integrity check is done. User needs to close the log file after viewing it; otherwise, Windows will prevent writing to the file when a new integrity check is done. An example of a log file with errors is shown in 57.
9. Clear – Clears the log file window.

**Note:** Files needed to be merged should be in time series order. Please ensure the file extension is sequentially numbered. Example DataRun1\_0, DataRun1\_1, DataRun1\_2....etc.

**Note:** The maximum file size that the MT Processing software can handle at this time is 32 megabytes. Merging data files to sizes larger than this limit should not be done, but performing an integrity check on a large amount of data files can be useful in determining any time gap or error.

### 3. Data processing

Selecting Data processing from the Tools submenu will open the Data processing window Figure 51. This window allows the user to process binary data files. These data files can be single data files obtained from the memory card during data acquisition or a merged data file obtained above.

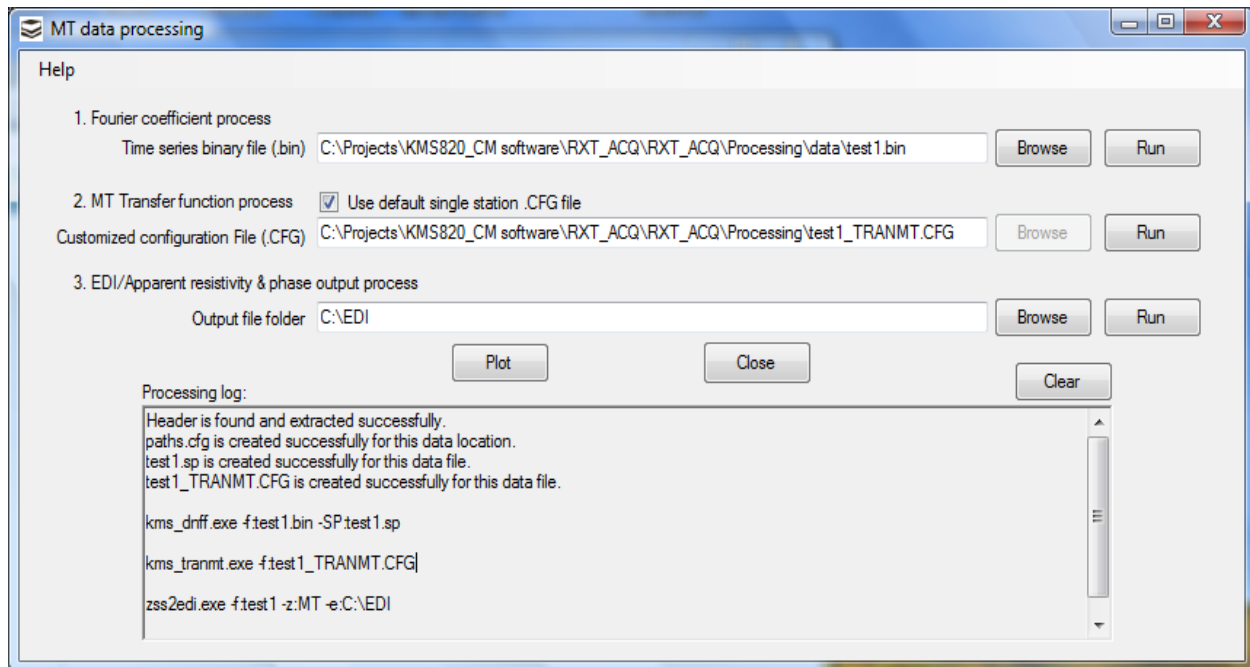


Figure 51- MT data processing window

1. Help – The help menu provides background documentation on the process. Drop down menu opens various help files for manually configuring the data processing. See the MT Processing supplement for more information on manually running the software.
2. Time series binary file (.bin) path window - The binary file to be processed.
3. Browse - Allow the user to open a standard Microsoft Windows® window and select the file to be processed. Once the file is selected an information window, Figure 52, opens showing what files were created to facilitate data processing.

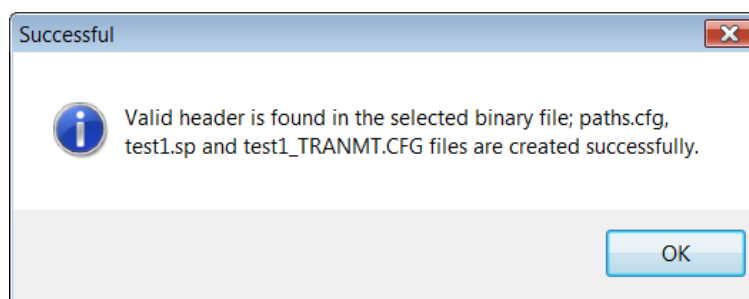


Figure 52 - Information window

4. Run - The run button for the Time series binary file (.bin) path window executes the first step in the processing.
5. Use default single station .CFG file – This check box is checked for automated data processing configuration file determined from the data file header. If the user is manually configured the .CFG file uncheck this checkbox and select the customized configuration file .CFG in step 6 below. See the help files and the MT Processing Software supplement for more information on manually configuring this file.
6. Customized configuration file (.CFG) path window - This window is automatically filled in when the data file is selected in step 2 and 3 above. If the user is using a manually configured file it can be selected using the Browse button to the right of this window.

7. Browse - Allow the user to open a standard Microsoft Windows® window and select the configuration file to be used for data processing if different from the default file provided.
8. Run – The run button for Customized configuration file (.CFG) path window executes the second step in the processing.
9. Output file folder path window – The user selects the output path for the EDI formatted output file and the apparent resistivity .apr file. The file name is the same as the input data file name selected in step 2 and 3 above. Example, if the data file is “Test1.bin” the output file, in the file folder you selected, would be “Test1.edi” and “Test1.apr”.
10. Browse - Allow the user to open a standard Microsoft Windows® window and select the Output file folder.
11. Run – The run button for Output file folder path window executes the final step in the processing.
12. Plot – Allow the user to plot the apparent resistivity file produced in step 11 above, Figure 53; .apr file needs to be selected by click “Plot data” for apparent resistivity curve display.
13. Close – Closes the MT data processing window.
14. Clear – Clears the Processing log in the bottom section of the MT data processing window.
15. The background running command lines are shown in the log text box.

**Note:** To use the automated KMS-200 MT Processing software, see page 45, the coils must be connected to channels 1, 2, 3 and electrodes connected to channels 4, 5. Channel 6 must be disabled, see page 35. The user may manually configure the KMS-200 MT Processing software to run in any sensor configuration, refer to the KMS-200 MT Processing software user manual supplement for instructions on manual configuration of the software.

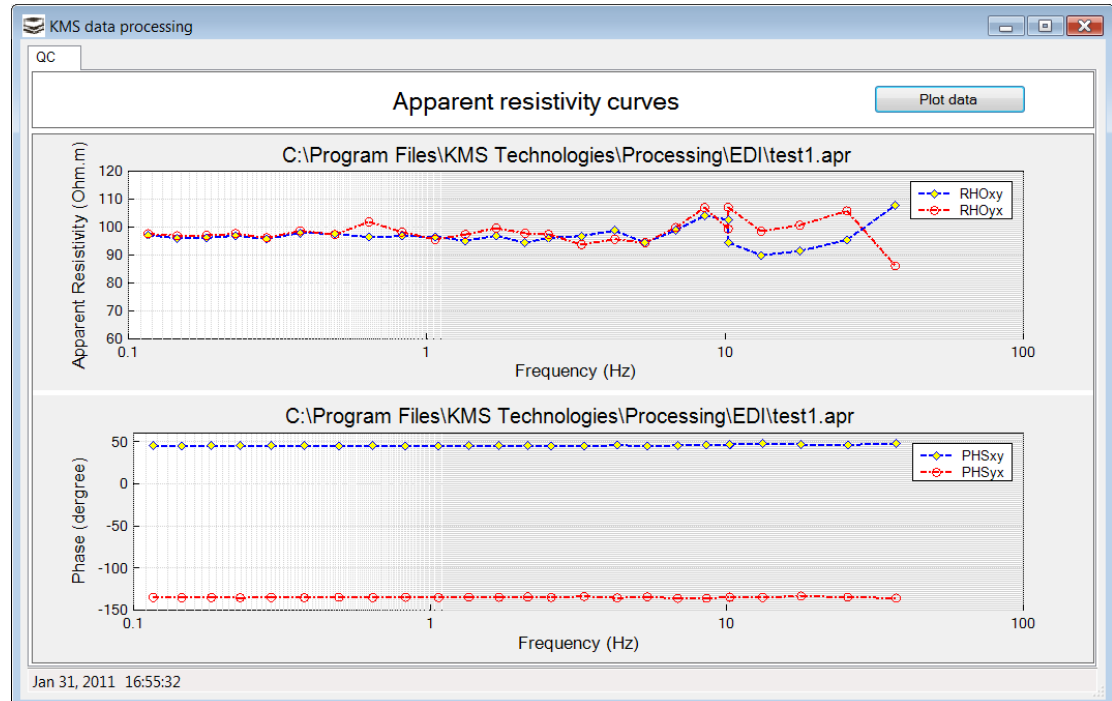


Figure 53 – Apparent resistivity curves

The procedure for running the automated MT Data Processing software is as follows:

1. Select the data file (.bin)

2. Select the output folder location.
3. Press the Time series binary file (.bin) Run button.
4. Press the Customized configuration file (.CFG) Run button.
5. Press the Output file folder Run button.

The output files are available to be plotted or can be further processed.

#### 6.4.03 Battery life

To maximize battery life during data acquisition perform the following:

1. Turn off the top panel display page 23.
2. Ensure data streaming is disabled page 36.

#### 6.4.04 Flash drive mode

The KMS-820 can act as a USB connected flash drive allowing the user to copy files directly from the memory card to a PC.

1. Connect the supplied USB A-A cable.
2. Hold down the F1 button on the top panel then power up the unit, hold down the POWER button.
3. Release both Power and F1 buttons.
4. The Service indicator on the top panel will be solid green.
5. To exit flash drive mode turn the unit off.

The unit will appear in Microsoft Windows® as a flash drive.

## 7.0 WARRANTY

The term of warranty is 12 months after delivery if all requirements of the present instruction including precautions and warnings are adhered to. During this term the manufacturer is liable to repair the defects occurred through no fault of the consumer or force majeure, or if not possible, to change the device by other equivalent specimen.

## 8.0 COPYRIGHT STATEMENT

Copyright 2011© by KJT Enterprises Inc. All rights reserved.

This user manual may be downloaded for personal use. Reproduction, redistributing, or reselling any material from this user manual in either machine-readable form or any other form without the permission of KJT Enterprises Inc. is strictly forbidden.

For permissions and other copyright-related questions please direct in writing/email to

KMS Technologies –KJT Enterprises Inc.  
6420 Richmond Ave, Suite 610  
Houston, TX 77057  
USA  
[Kurt@kmstechnologies.com](mailto:Kurt@kmstechnologies.com)

## 9.0 TROUBLESHOOTING

This troubleshooting guide is not all inclusive. Please contact KMS Technologies with any problems not identified in this manual.

Email: [info@kmstechnologies.com](mailto:info@kmstechnologies.com)

Phone: +1-281-829-3340

Address:

Help Desk

KMS Technologies

1325 S. Creek Dr. STE 300

Houston, TX 77084

USA

Problem / Indication	Possible cause	Solution
Memory card error:	<ol style="list-style-type: none"> <li>1. Save over run.</li> <li>2. SD save error.</li> <li>3. SD card not ready.</li> </ol>	<ol style="list-style-type: none"> <li>1. Perform memory card exchange – page 23.</li> <li>2. Restart data acquisition.</li> </ol>
<p>Internal battery will not charge.</p> <p>Internal battery will not hold a charge.</p>	Internal battery needs to be replaced.	<p>Replace the internal battery. Panasonic model number : LC-R123R4P</p> <p>Replace the internal battery as follows:</p> <ol style="list-style-type: none"> <li>1. Remove the 10 screws from the top panel; retain the o-rings for reinstallation.</li> <li>2. Carefully lift the top panel. DO NOT FULLY OPEN THE TOP PANEL AT THIS TIME.</li> <li>3. Disconnect the SD card adapter cable, Figure 54. The side locks on the board connector must be disengaged to remove the cable.</li> </ol> <div data-bbox="964 1056 1240 1409" data-label="Image"> </div> <p>SD card adapter cable side lock (shown in locked position)</p> <p>SD card adapter cable side lock (shown in unlocked position)</p> <p>Figure 54 - SD card adapter cable and connector</p> <ol style="list-style-type: none"> <li>4. Fully open the top panel.</li> <li>5. Disconnect the red and black battery terminals connectors, Figure 55.</li> </ol>

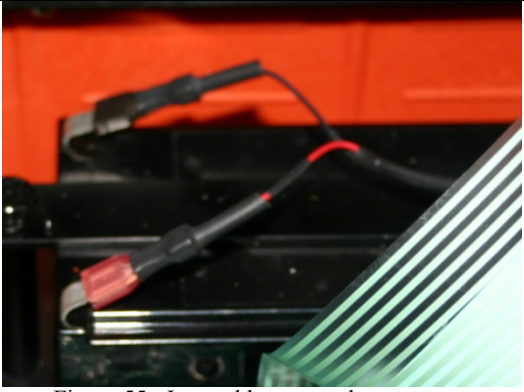
		 <p>Figure 55 - Internal battery and connectors</p> <ol style="list-style-type: none"> <li>Remove the two (2) thumb screws holding down the battery bracket.</li> <li>Remove the battery bracket.</li> <li>Remove the old battery.</li> <li>Install the new battery.</li> <li>Reinstall the battery bracket and two (2) battery bracket thumb screws. <b>DO NOT OVER TIGHTEN THE THUMB SCREWS.</b></li> <li>Reconnect the red and black battery terminal connectors. Red – positive, Black – negative.</li> <li>Reconnect the SD card adapter cable ensuring proper orientation, the cable is keyed to fit only one direction, and secure the connector with the side locks, Figure 1Figure 54 - SD card adapter cable and connector.</li> <li>Reinstall the top panel.</li> <li>Install the 10 screws with rubber o-rings removed in step 1 above.</li> </ol>
<p>The unit will not respond to any key combination.</p> <p>Indicating lights to not change.</p> <p>The unit will not enter any mode including acquisition, standby, flash drive, etc..</p>	<p>The unit's internal software has encountered a critical error that the internal watchdog timer can not recover.</p>	<p>Perform a hard re-boot of the unit.</p> <p>Please inform KMS Technologies when this procedure is required and actions being performed at the time of this error.</p> <ol style="list-style-type: none"> <li>Remove the 10 screws from the top panel; retain the o-rings for reinstallation.</li> <li>Carefully lift the top panel. <b>DO NOT FULLY OPEN THE TOP PANEL AT THIS TIME.</b></li> <li>Disconnect the SD card adapter cable, Figure 54. The side locks on the board connector must be disengaged to remove the cable.</li> <li>Fully open the top panel.</li> <li>Disconnect the red and terminal connector, Figure 55.</li> <li>Wait 10 seconds.</li> <li>Reconnect the red battery terminal connector.</li> <li>Reconnect the SD card adapter cable ensuring proper orientation, the cable is keyed to fit only one direction, and secure the connector with the side locks, Figure 54</li> <li>Reinstall the top panel.</li> <li>Install the 10 screws with rubber o-rings removed in step 1 above.</li> </ol>
<p>Communication can not be established with the unit</p>	<p>Lost communication with the unit.</p>	<p>Reestablish communication with the unit see page 39</p>

Table 5 -Troubleshooting

## 10.0 APPENDIX

### 10.1 Header Definition

The binary file has 1 or more data blocks. Each data block has two pages of header followed by 90 pages of data (512 bytes/page). Please refer the attached excel sheet for definition of header. The bytes beyond the definition of header (offset equal or over 664 bytes) are not used and will be used for future expansion. But header is always written as 1024 bytes including these unused bytes.

The data follow the header. Each sample has 24-bit (or 3 bytes, full scale of -2.5V ~ +2.5V) starting from lower channel to higher channel up to total of 6 channels, then repeat, BYTE3 is the most significant byte and BYTE0 is the least significant byte. For example:

CH1\_BYTE2, CH1\_BYTE1, CH1\_BYTE0, CH2\_BYTE2, CH2\_BYTE1, CH2\_BYTE0,  
CH3\_BYTE2, CH3\_BYTE1, CH3\_BYTE0, CH4\_BYTE2, CH4\_BYTE1, CH4\_BYTE0,  
CH5\_BYTE2, CH5\_BYTE1, CH5\_BYTE0, CH6\_BYTE2, CH6\_BYTE1, CH6\_BYTE0,  
CH1\_BYTE2, CH1\_BYTE1, CH1\_BYTE0, CH2\_BYTE2, CH2\_BYTE1, CH2\_BYTE0,

.....

Some of the channels may not be enabled, which is shown in AD\_ctrl\_word, the disabled channels will be skipped in the data packet. For example, when CH3 and CH6 are disabled, the data will be

CH1\_BYTE2, CH1\_BYTE1, CH1\_BYTE0, CH2\_BYTE2, CH2\_BYTE1, CH2\_BYTE0,  
CH4\_BYTE2, CH4\_BYTE1, CH4\_BYTE0, CH6\_BYTE2, CH6\_BYTE1, CH6\_BYTE0,  
CH1\_BYTE2, CH1\_BYTE1, CH1\_BYTE0, CH2\_BYTE2, CH2\_BYTE1, CH2\_BYTE0,

.....

All the data are in big Endian format. The gain consists stage 1 (1, 8, 40, defined by CHx\_GAIN\_MUX\_EN and CHx\_GAIN\_MUX\_IN) and stage 2 (1, 4, 16, 64, defined by CHx\_GAIN\_SEL). The LP filter follows the gain stages defined by CHx\_LPF\_MUX (20KHz, 1KHz, 10Hz, bypass LPF).

The sampling frequency (40, 80, 200, 1k, 4k, 10k, 20k, 40k, 100k Hz) is defined in header.

## Header Definition

Bit offset	Number of bytes	Data Type	Name	Description
0	4	char	packet_starting_flag[4]	'K', 'M', 'S', 'H'
4	2	unsigned short int	packet_length	The length of bytes in this packet for header
6	2	unsigned short int	host_WI_network_address	The host network address
8	16	unsigned char	KMS820_SN	KMS 820 serial number, 16 characters
24	2	unsigned short int	KMS820_network_address	16-bit network address, user address mode
26	2	unsigned short int	KMS820_network_address_mask	Address mask (0xFF00)
28	4	unsigned int	send_packet_ID	32 bit package ID sent since power up
32	4	unsigned int	send_header_packet_ID	32 bit header ID sent since power up
36	4	unsigned int	save_packet_ID	32 bit package ID sent since power up
40	1	unsigned char	network_mode	The network mode (user addressing, assured delivery)
41	1	unsigned char	firmware_version	Firmware version number
42	1	unsigned char	unused_char3	Unused
43	1	unsigned char	fpga_version	FPGA version number
44	32	unsigned char	GPS_pos_info[32]	The ASCII information of GPS Format: Latitude (ddmm.mmmmmm,) Hemisphere 'N' or 'S' Longitude (ddmm.mmmmmm,) Longitude 'E' or 'W' Status 'V' rev warn; 'A' valid Mode: 'A' valid, autonomous 'D' valid, differential 'E' invalid, estimated 'N' invalid, not valid
76	24	unsigned char	GPS_time_info[24]	The ASCII time, information of GPS, add 3 bytes for 3 memory words (32 -bit memory) Format: symbol "DA," extra 3 bytes UTC hour,min,sec (hhmmss.sss,) UTC day (dd,) UTC month (mm,) UTC year (yyyy)
100	8	unsigned char	GPS_syn_clk[8]	8-byte GPS sync clock Frequency minimum 0(disabled) or 10Hz (eg. "12.00002" MHz)
108	4	unsigned int	sampling_frequency	Sampling frequency which is used for MCU to determine the saving/sending trigger level (Hi, or Lo)
112	8	unsigned long long int	first_sample_acq_time	The time (uS) of first sample in this package; the real time = acq_time + GPS base time
120	2	unsigned short int	sampling_time_read_frame_interval	Number of frame interval before sampling time is read
122	2	unsigned short int	AD_main_temperature	Temperature of main canister
124	2	unsigned short int	AD_SYS_I	Total current of the system
126	2	unsigned short int	AD_N11V	-11V AD
128	2	unsigned short int	AD_P11V	+11V AD
130	2	unsigned short int	AD_SYS_V	System input voltage from battery



Bit offset	Number of bytes	Data Type	Name	Description
132	96	unsigned char	sensor_SN[NUM_OF_CH][16]	Serial number for 6 channels, 16 characters for each SN
228	6	unsigned char	sensor_orientation[6]	Sensor orientation: -, X, Y, or Z character
234	1	unsigned char	Wireless signal strength	The strength of wireless signal in dBm, from RSSI reg of W1232
235	1	unsigned char	unused_11	Unused
236	12	unsigned short int	sensor_angle[6]	0~359 degree
248	12	unsigned short int	sensor_distance[6]	0 ~ 65535 meters
260	6	unsigned char	sensor_ID[NUM_OF_CH]	ID of sensors for 6 channels ID = 0, unkown sensor, ID = 1, unkown coil, ID = 2, unkown electrode, ID = 3, user sensor, ID = 4, LEMI-118, 1-70kHz ID = 5, LEMI-120, 0.0001-1kHz ID = 6, LEMI-121, 0.0001~500Hz, ID = 7, LEMI-701, electrode, default: 1KHz
266	1	unsigned char	num_of_AD_page_send_queue_trigger_level	
267	1	unsigned char	num_of_AD_page_save_queue_trigger_level	
268	2	unsigned short int	AD_send_available_RX_buffers	
270	2	unsigned short int	AD_save_availble_512_pages	
272	8	status_word_t	status	Status word
280	8	CH_setting_word_t	ch_setting	Channel setting word
288	4	AD_ctrl_word_t	AD_ctrl_word	32-bit AD control word
292	12	unsigned short int	DA_offset_value[NUM_OF_CH]	D/A offset value of D/A
304	2	unsigned short int	DA_CAL_value	D/A CAL for board
306	2	unsigned short int	DA_SENSOR_value	D/A sensor cal for sensors
308	64	unsigned char	SD_file_name[64]	Name of SD card saving file
372	2	unsigned short int	SD_file_sector_size	File sector size
374	2	unsigned short int	SD_AD_data_sector_size_per_header	Number of sectors per header
376	4	unsigned int	SD_file_limit_num	The limit of the number of SD files with current saving name
380	4	unsigned int	SD_file_index	The current file index
384	2	unsigned short int	SD_file_saved_sectors	
386	2	unsigned short int	SD_percent_freeSpace	
388	4	unsigned int	SD_freeSpace	Free space of SD card
392	144	unsigned short int	ch_gain_table[6][3][4]	Nominal gain * this gain table value * 0.001 is the real gain [6]: 6 channel; [3]: first stage gain; [4]: second stage gain Eg. for CH2 [1], with first stage gain = 8 [1], second stage gain = 64 [3] The real gain = 8 * 64 * ch_gain_table[1][1][3] * 0.001
536	128	unsigned char	user_comments	128 characters of user comments

<b>Status_word_t Definition(offset 156 in header)</b>				
<b>Bit offset</b>	<b>Number of bytes</b>	<b>Data Type</b>	<b>Name</b>	<b>Description</b>
0	1	unsigned int	acq_on:1	0, acquisition on
1	1	unsigned int	GPS_time_synced:1	0, MCU can save data OK ;
2	1	unsigned int	GPS_position_synced:1	0, GPS position not synced; 1: synced
3	1	unsigned int	GPS_fixed:1	0, GPS not fixed; 1: GPS fixed
4	1	unsigned int	file_allocation_error:1	0, OK; 1 error
5	1	unsigned int	file_save_error:1	0, OK; 1 error
6	1	unsigned int	file_save_num_limit_reached:1	0, OK; 1 the number of file save reach the limited number
7	1	unsigned int	SD_exchange_in_progress:1	0, normal mode; 1,SD exchange in progress
8	1	unsigned int	display_lock:1	0, disabled; 1 enabled
9	1	unsigned int	keypad_lock:1	0, disabled; 1 enabled
10	1	unsigned int	AD0_over_range:1	0, AD0 is within range; 1: over range
11	1	unsigned int	AD1_over_range:1	0, AD1 is within range; 1: over range
12	1	unsigned int	AD2_over_range:1	0, AD2 is within range; 1: over range
13	1	unsigned int	AD3_over_range:1	0, AD3 is within range; 1: over range
14	1	unsigned int	AD4_over_range:1	0, AD4 is within range; 1: over range
15	1	unsigned int	AD5_over_range:1	0, AD5 is within range; 1: over range
16	1	unsigned int	power_saving_mode:1	0, normal mode; 1, in power saving mode
17	1	unsigned int	saving_in_progress:1	1, saving in program; 0: not
18	1	unsigned int	command_from_CDC_UART:1	0, the command is from CDC; 1, from UART; so that it knows where to send response, such as header
19	1	unsigned int	AD_SAVE_OVER_RUN:1	0, MCU can save data OK ; 1: data overrun
20	1	unsigned int	AD_SEND_OVER_RUN:1	0, CDC/UART wireless all data OK ; 1: data overrun
21	1	unsigned int	invalid_RX_command:1	0, command is fine; 1: command is not correct due to checksum or length
22	2	unsigned int	unused_3:2	unused
24	1	unsigned int	RX0_time_gap_error:1	0, uart wireless RX ok; 1, no enough time gap between packet or packet too long
25	1	unsigned int	sampling_time_send_valid:1	1, the sampling time is valid for the next data packet; 0, not valid, just inserted for slow sampling frequency
26	1	unsigned int	sampling_time_save_valid:1	1, the sampling time is valid for the next data packet; 0, not valid, just inserted for slow sampling frequency
27	1	unsigned int	acquire_force_restart:1	0,not restart if acquire is already started; 1: restart the acquisition
28	1	unsigned int	enable_SD_save:1	0, don't save; 1: save to SD according to file setting, if no file is set, create folder with time and the file as data_n under current time fold
29	1	unsigned int	CDC_send_enabled:1	0, CDC send NOT enabled; 1, enabled
30	1	unsigned int	UART_send_enabled:1	0, uart wireless send NOT enabled; 1, enabled
31	1	unsigned int	send_header_on:1	0, send both AD and header; 1, send header only
32	1	unsigned int	SD_NOT_READY_AT_ACQ_START	0, SD is OK; 1, SD card is not ready when start ACQ
33-63	31	unsigned int	unused_0	not used

**CH\_setting\_word\_t Definition (offset 164 in header)**

Bit offset	Number of bytes	Data Type	Name	Description
0	1	unsigned int	CH0_GAIN_MUX_IN:1	
1	1	unsigned int	CH0_GAIN_MUX_EN:1	
2	1	unsigned int	CH1_GAIN_MUX_IN:1	
3	1	unsigned int	CH1_GAIN_MUX_EN:1	
4	1	unsigned int	CH2_GAIN_MUX_IN:1	
5	1	unsigned int	CH2_GAIN_MUX_EN:1	
6	1	unsigned int	CH3_GAIN_MUX_IN:1	
7	1	unsigned int	CH3_GAIN_MUX_EN:1	
8	1	unsigned int	CH4_GAIN_MUX_IN:1	11: gain of 40
9	1	unsigned int	CH4_GAIN_MUX_EN:1	10: gain of 8
10	1	unsigned int	CH5_GAIN_MUX_IN:1	00, 01: gain of 1
11	1	unsigned int	CH5_GAIN_MUX_EN:1	EN, IN
12	2	unsigned int	CH0_GAIN_SEL:2	
14	2	unsigned int	CH1_GAIN_SEL:2	11: gain of 64
16	2	unsigned int	CH2_GAIN_SEL:2	10: gain of 16
18	2	unsigned int	CH3_GAIN_SEL:2	01: gain of 4
20	2	unsigned int	CH4_GAIN_SEL:2	00: gain of 1
22	2	unsigned int	CH5_GAIN_SEL:2	SEL(2 downto 1)
24	2	unsigned int	CH0_LPF_MUX:2	
26	2	unsigned int	CH1_LPF_MUX:2	3: bypass LPF
28	2	unsigned int	CH2_LPF_MUX:2	2: LPF = 10Hz;
30	2	unsigned int	CH3_LPF_MUX:2	1: LPF = 1K;
32	2	unsigned int	CH4_LPF_MUX:2	0: LPF = 20K;
34	2	unsigned int	CH5_LPF_MUX:2	LPF_MUX(1 downto 0)-
36	2	unsigned int	INPUT_MUX:2	0: log, 1: open input, 2: zero, 3: cal
38~63	26	unsigned int	unused:26	

**AD\_ctrl\_word Definition (offset 172 in header)**

Bit offset	Number of bytes	Data Type	Name	Description
0	1	unsigned int	ch0_enable:1	0, disabled; 1: enabled
1	1	unsigned int	ch1_enable:1	0, disabled; 1: enabled
2	1	unsigned int	ch2_enable:1	0, disabled; 1: enabled
3	1	unsigned int	ch3_enable:1	0, disabled; 1: enabled
4	1	unsigned int	ch4_enable:1	0, disabled; 1: enabled
5	1	unsigned int	ch5_enable:1	0, disabled; 1: enabled
6	1	unsigned int	AD_mode0:1;	0, disabled; 1: enabled
7	1	unsigned int	AD_mode1:1;	Mode[1:0] Max. f data 00 high speed 144,531 01 high resolution 52,734 10 low power 52,734 11 low speed 10,547
8	1	unsigned int	AD_CLK_DIV:1	1 = 37MHz(high speed mode) /otherwise 27MHz 0 = 13.5MHz(low- power)/ 5.4MHz(low speed)
9	1	unsigned int	GPS_syn_clk_div_16:1	0, no div for gps clk; 1: divided by 16 for sync clock to A/D
10	3	unsigned int	AD_FORMAT:3	Format 2 downto 0 AD output format
13	19	unsigned int	unused:19	Unused

## 10.2 Example merged error log file.

Continuity check begin ...

Check SatDataGND40Hz\_1.bin

Header interpretation successful; time = 1/29/2011, 20:46:44, 209324 uS;  
Data sample index start: 1; number of samples: 2560;  
Header interpretation successful; time = 1/28/2011, 17:33:00, 200388 uS;  
Data sample index start: 2561; number of samples: 5120;  
Header interpretation successful; time = 1/28/2011, 17:33:03, 272388 uS; **time does NOT match correctly.**  
Data sample index start: 7681; number of samples: 2560;  
Header interpretation successful; time = 1/28/2011, 17:33:06, 344388 uS; **time does NOT match correctly.**  
Data sample index start: 10241; number of samples: 2560;  
Header interpretation successful; time = 1/28/2011, 17:33:09, 416388 uS; **time does NOT match correctly.**  
Data sample index start: 12801; number of samples: 2560;  
Header interpretation successful; time = 1/28/2011, 17:33:12, 488388 uS; **time does NOT match correctly.**  
Data sample index start: 15361; number of samples: 2560;  
Header interpretation successful; time = 1/28/2011, 17:33:15, 560388 uS; **time does NOT match correctly.**  
Data sample index start: 17921; number of samples: 2560;  
Header interpretation successful; time = 1/28/2011, 17:33:18, 632388 uS; **time does NOT match correctly.**  
Data sample index start: 20481; number of samples: 2560;  
Header interpretation successful; time = 1/28/2011, 17:33:21, 704388 uS; **time does NOT match correctly.**  
Data sample index start: 23041; number of samples: 2560;  
Header interpretation successful; time = 1/28/2011, 17:33:24, 776388 uS; **time does NOT match correctly.**  
Data sample index start: 25601; number of samples: 2560;  
**Header flags do NOT match, skip 518140 bytes**

Check SatDataGND\_1k\_1.bin

Header interpretation successful; time = 1/29/2011, 20:25:21, 128387 uS;  
Data sample index start: 28161; number of samples: 5120;  
Header interpretation successful; time = 1/29/2011, 20:25:23, 688387 uS; **time does NOT match correctly.**  
Data sample index start: 33281; number of samples: 2560;  
Header interpretation successful; time = 1/29/2011, 20:25:26, 248387 uS; time match correctly;  
Data sample index start: 35841; number of samples: 2560;  
Header interpretation successful; time = 1/29/2011, 20:25:28, 808387 uS; time match correctly;  
Data sample index start: 38401; number of samples: 2560;  
Header interpretation successful; time = 1/29/2011, 20:25:31, 368387 uS; time match correctly;  
Data sample index start: 40961; number of samples: 2560;  
Header interpretation successful; time = 1/29/2011, 20:25:33, 928387 uS; time match correctly;  
Data sample index start: 43521; number of samples: 2560;  
Header interpretation successful; time = 1/29/2011, 20:25:36, 488387 uS; time match correctly;  
Data sample index start: 46081; number of samples: 2560;  
Header interpretation successful; time = 1/29/2011, 20:25:39, 048387 uS; time match correctly;  
Data sample index start: 48641; number of samples: 2560;  
Header interpretation successful; time = 1/29/2011, 20:25:41, 608387 uS; time match correctly;  
Data sample index start: 51201; number of samples: 2560;  
Header interpretation successful; time = 1/29/2011, 20:25:44, 168387 uS; time match correctly;  
Data sample index start: 53761; number of samples: 2560;  
Header interpretation successful; time = 1/29/2011, 20:25:46, 728387 uS; time match correctly;  
Data sample index start: 56321; number of samples: 2560;  
Header interpretation successful; time = 1/29/2011, 20:25:49, 288387 uS; time match correctly;  
Data sample index start: 58881; number of samples: 2560;  
Header interpretation successful; time = 1/29/2011, 20:25:51, 848387 uS; time match correctly;  
Data sample index start: 61441; number of samples: 2560;  
Header interpretation successful; time = 1/29/2011, 20:25:54, 408387 uS; time match correctly;  
Data sample index start: 64001; number of samples: 2560;  
Header interpretation successful; time = 1/29/2011, 20:25:56, 968387 uS; time match correctly;  
Data sample index start: 66561; number of samples: 2560;  
Header interpretation successful; time = 1/29/2011, 20:25:59, 528387 uS; time match correctly;  
Data sample index start: 69121; number of samples: 2560;  
**Header flags do NOT match, skip 22798332 bytes**

File integrity check done.

**SatDataGND40Hz\_1.bin has problem; check this log above for detail information.**

**SatDataGND\_1k\_1.bin has problem; check this log above for detail information.**